

# BRE antibody

Catalog Number: 108585

## Product name

BRE antibody

IP: 1:200-1:2000

IHC: 1:20-1:200

## Specificity

Human; other species not tested.

## Antibody description

BRE Rabbit Polyclonal antibody. Positive IP detected in PC-3 cells. Positive WB detected in PC-3 cells. Positive IHC detected in human gliomas tissue. Observed molecular weight by Western-blot: 44 kDa

## Preparation

This antibody was obtained by immunization of BRE recombinant protein (Accession Number: NM\_199194). Purification method: Antigen affinity purified.

## Formulation

PBS with 0.1% sodium azide and 50% glycerol pH 7.3.

## Storage

Store at -20°C. DO NOT ALIQUOT

## Clonality

Polyclonal

## Ig Type

Rabbit IgG

## Applications

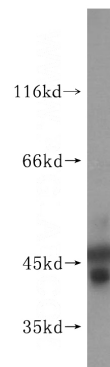
ELISA, WB, IHC, IP

## Dilutions

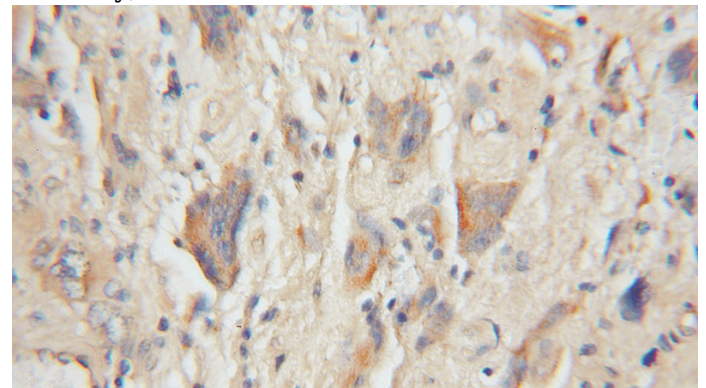
Recommended Dilution:

WB: 1:500-1:5000

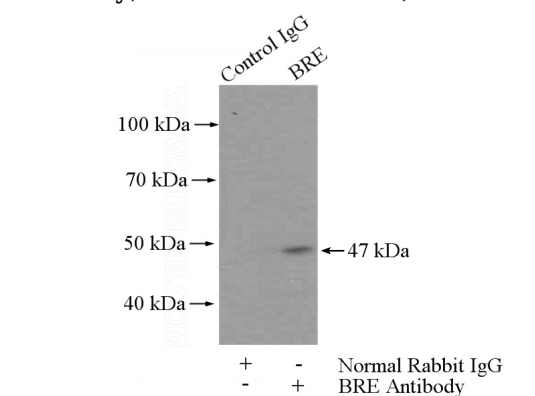
## Validations



PC-3 cells were subjected to SDS PAGE followed by western blot with Catalog No:117232(BRE antibody) at dilution of 1:500



Immunohistochemical of paraffin-embedded human gliomas using Catalog No:117232(BRE antibody) at dilution of 1:50 (under 10x lens)



IP Result of anti-BRE (IP:Catalog No:117232, 4ug; Detection:Catalog No:117232 1:500) with PC-3

# BRE antibody



Catalog Number: 108585

---

cells lysate 2400ug.