

BPI antibody

Catalog Number: 108570

Product name

BPI antibody

Specificity

Human; other species not tested.

Antibody description

BPI Rabbit Polyclonal antibody. Positive WB detected in Transfected HEK-293 cells. Positive IF detected in HepG2 cells.

Preparation

This antibody was obtained by immunization of BPI recombinant protein (Accession Number: NM_001725). Purification method: Antigen affinity purified.

Formulation

PBS with 0.1% sodium azide and 50% glycerol pH 7.3.

Storage

Store at -20°C. DO NOT ALIQUOT

Clonality

Polyclonal

Ig Type

Rabbit IgG

Applications

ELISA, IF, WB

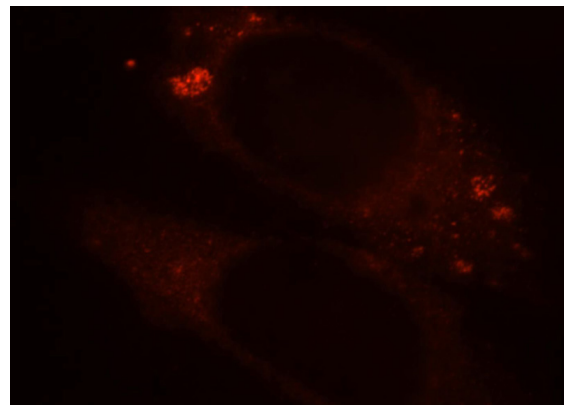
Dilutions

Recommended Dilution:

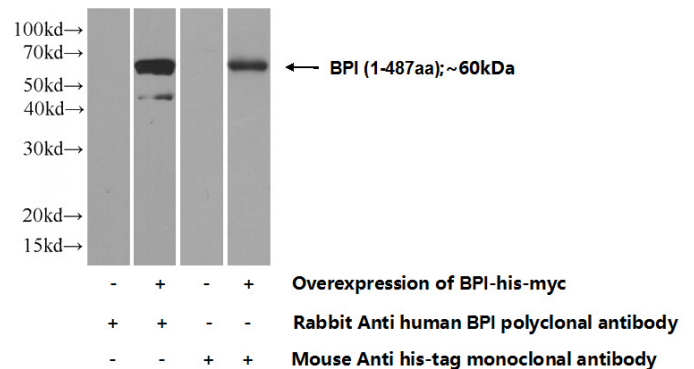
WB: 1:500-1:5000

IF: 1:10-1:100

Validations



Immunofluorescent analysis of HepG2 cells, using BPI antibody Catalog No:117217 at 1:25 dilution and Rhodamine-labeled goat anti-rabbit IgG (red).



Transfected HEK-293 cells were subjected to SDS PAGE followed by western blot with Catalog No:117217(BPI Antibody) at dilution of 1:1000