

BVES antibody



Catalog Number: 108556

Product name

BVES antibody

Specificity

Human, Mouse, Rat; other species not tested.

Antibody description

BVES Rabbit Polyclonal antibody. Positive WB detected in mouse skeletal muscle tissue. Positive IHC detected in human ovary tumor tissue. Observed molecular weight by Western-blot: 41-70 kDa

Preparation

This antibody was obtained by immunization of BVES recombinant protein (Accession Number: NM_001199563). Purification method: Antigen affinity purified.

Formulation

PBS with 0.02% sodium azide and 50% glycerol pH 7.3.

Storage

Store at -20°C. DO NOT ALIQUOT

Clonality

Polyclonal

Ig Type

Rabbit IgG

Applications

ELISA, IHC, WB

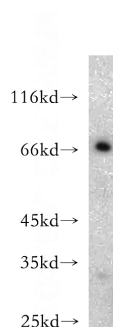
Dilutions

Recommended Dilution:

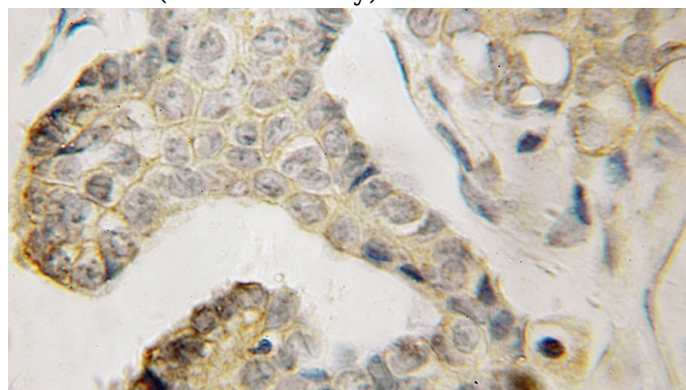
WB: 1:200-1:2000

IHC: 1:20-1:200

Validations



mouse skeletal muscle tissue were subjected to SDS PAGE followed by western blot with Catalog No:108556(BVES antibody) at dilution of 1:500



Immunohistochemical of paraffin-embedded human ovary tumor using Catalog No:108556(BVES antibody) at dilution of 1:100 (under 10x lens)