

BTG2 antibody



Catalog Number: 108542

Product name

BTG2 antibody

WB: 1:500-1:5000

IHC: 1:20-1:200

Immunogen

[Human BTG2 Recombinant protein \(GST tag\)](#)

Specificity

Human; other species not tested.

Antibody description

BTG2 Rabbit Polyclonal antibody. Positive WB detected in Transfected HEK-293 cells. Positive IHC detected in human small intestine tissue, human kidney tissue.

Preparation

This antibody was obtained by immunization of BTG2 recombinant protein (Accession Number: NM_006763). Purification method: Antigen affinity purified.

Formulation

PBS with 0.02% sodium azide and 50% glycerol pH 7.3.

Storage

Store at -20°C. DO NOT ALIQUOT

Clonality

Polyclonal

Ig Type

Rabbit IgG

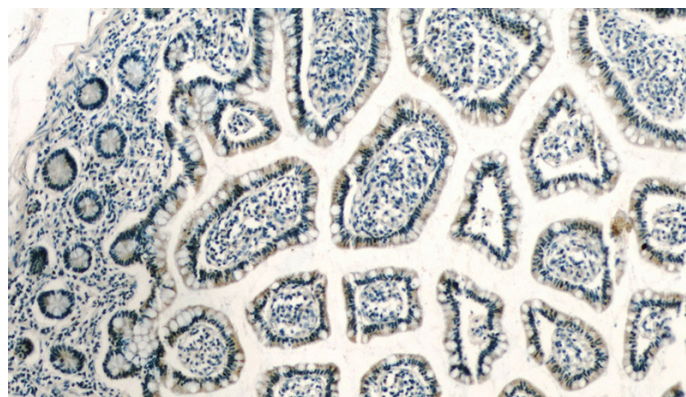
Applications

ELISA, IHC, WB

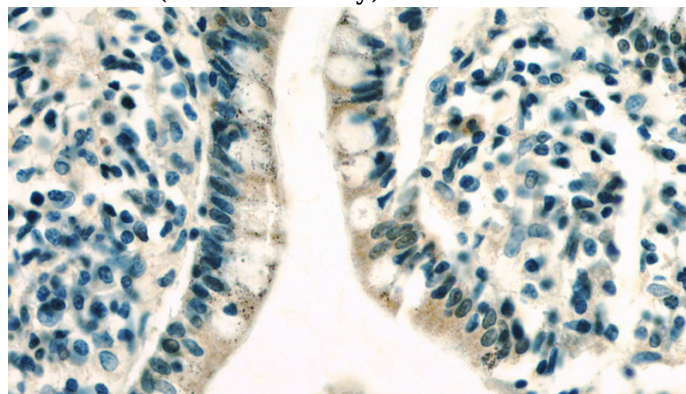
Dilutions

Recommended Dilution:

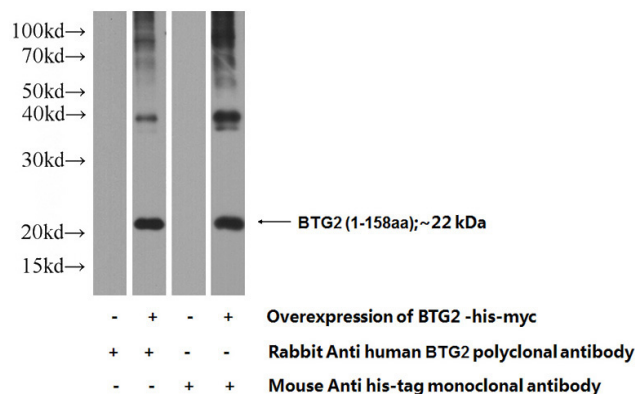
Validations



Immunohistochemistry of paraffin-embedded human small intestine slide using Catalog No:108542(BTG2 Antibody) at dilution of 1:50



Immunohistochemistry of paraffin-embedded human small intestine slide using Catalog No:108542(BTG2 Antibody) at dilution of 1:50



Transfected HEK-293 cells were subjected to SDS PAGE followed by western blot with Catalog

BTG2 antibody



Catalog Number: 108542

No:108542(BTG2 Antibody) at dilution of 1:1000