

AZI2 antibody

Catalog Number: 108522

Product name

AZI2 antibody

Specificity

Human, Mouse, Rat; other species not tested.

Antibody description

AZI2 Rabbit Polyclonal antibody. Positive WB detected in HepG2 cells. Positive IHC detected in human stomach tissue, human pancreas tissue, human testis tissue. Observed molecular weight by Western-blot: 45 kDa

Preparation

This antibody was obtained by immunization of AZI2 recombinant protein (Accession Number: BC001139). Purification method: Antigen affinity purified.

Formulation

PBS with 0.1% sodium azide and 50% glycerol pH 7.3.

Storage

Store at -20°C. DO NOT ALIQUOT

Clonality

Polyclonal

Ig Type

Rabbit IgG

Applications

ELISA, IHC, WB

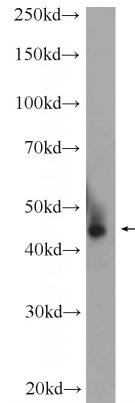
Dilutions

Recommended Dilution:

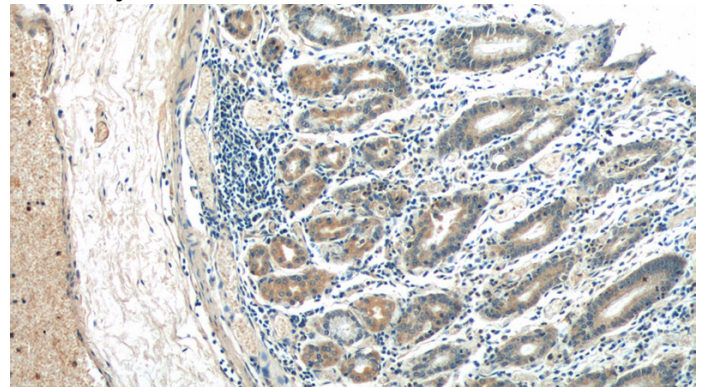
WB: 1:500-1:5000

IHC: 1:20-1:200

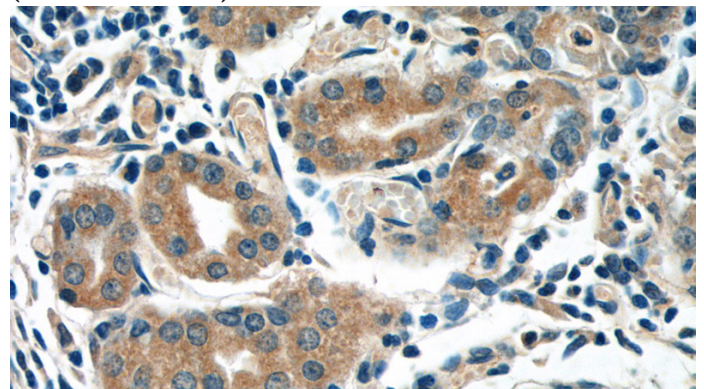
Validations



HepG2 cells were subjected to SDS PAGE followed by western blot with Catalog No:117083(AZI2 Antibody) at dilution of 1:1000



Immunohistochemistry of paraffin-embedded human stomach tissue slide using Catalog No:117083(AZI2 Antibody) at dilution of 1:50 (under 10x lens)



Immunohistochemistry of paraffin-embedded human stomach tissue slide using Catalog No:117083(AZI2 Antibody) at dilution of 1:50

AZI2 antibody



Catalog Number: 108522

(under 40x lens)