

# Biglycan antibody

Catalog Number: 108499

## Product name

Biglycan antibody

## Specificity

Human, Mouse, Rat; other species not tested.

## Antibody description

Biglycan Rabbit Polyclonal antibody. Positive IHC detected in human lung tissue, human liver cancer tissue, human renal cell carcinoma tissue, human stomach cancer tissue, mouse lung tissue. Positive IF detected in HepG2 cells. Positive IP detected in mouse skeletal muscle tissue. Positive WB detected in COLO 320 cells, HeLa cells, HepG2 cells, mouse skeletal muscle tissue, pig cartilage tissue. Observed molecular weight by Western-blot: 40-48 kDa

## Preparation

This antibody was obtained by immunization of Biglycan recombinant protein (Accession Number: NM\_001711). Purification method: Antigen affinity purified.

## Formulation

PBS with 0.02% sodium azide and 50% glycerol pH 7.3.

## Storage

Store at -20°C. DO NOT ALIQUOT

## Clonality

Polyclonal

## Ig Type

Rabbit IgG

## Applications

ELISA, WB, IHC, IF, IP

## Dilutions

Recommended Dilution:

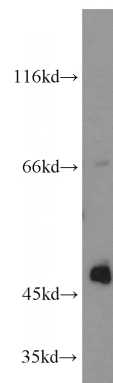
WB: 1:200-1:2000

IP: 1:200-1:1000

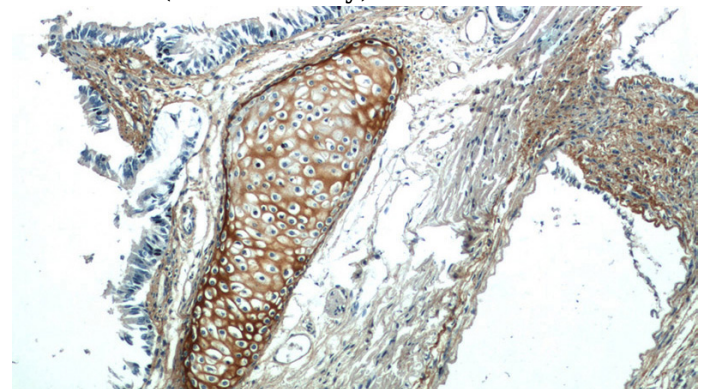
IHC: 1:20-1:200

IF: 1:20-1:200

## Validations



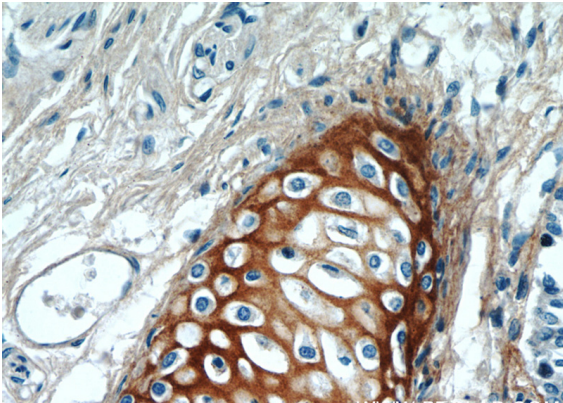
COLO 320 cells were subjected to SDS PAGE followed by western blot with Catalog No:117144(BGN antibody) at dilution of 1:800



Immunohistochemical of paraffin-embedded human lung using Catalog No:117144(BGN antibody) at dilution of 1:50 (under 10x lens)

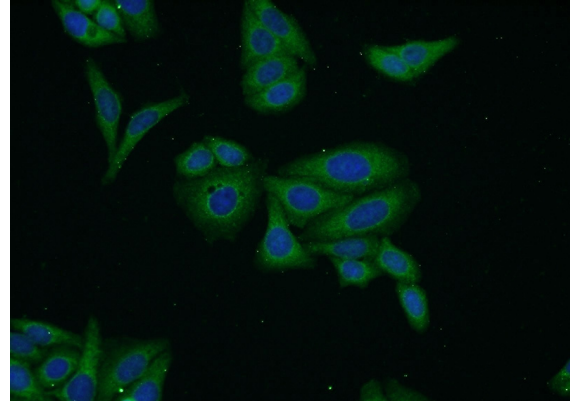
# Biglycan antibody

Catalog Number: 108499



Immunohistochemical of paraffin-embedded human lung using Catalog No:117144(BGN antibody) at dilution of 1:50 (under 40x lens)

IP Result of anti-Biglycan (IP:Catalog No:117144, 4ug; Detection:Catalog No:117144 1:300) with mouse skeletal muscle tissue lysate 2200ug.



Immunofluorescent analysis of HepG2 cells using Catalog No:117144(Biglycan Antibody) at dilution of 1:50 and Alexa Fluor 488-conjugated AffiniPure Goat Anti-Rabbit IgG(H+L)

