

# BHLHA15 antibody



Catalog Number: 108491

## Product name

BHLHA15 antibody

## Specificity

Human, Mouse, Rat; other species not tested.

## Antibody description

BHLHA15 Rabbit Polyclonal antibody. Positive IP detected in mouse liver tissue. Positive WB detected in mouse liver tissue, rat pancreas tissue. Observed molecular weight by Western-blot: 30 kDa

## Preparation

This antibody was obtained by immunization of BHLHA15 recombinant protein (Accession Number: NM\_177455). Purification method: Antigen affinity purified.

## Formulation

PBS with 0.1% sodium azide and 50% glycerol pH 7.3.

## Storage

Store at -20°C. DO NOT ALIQUOT

## Clonality

Polyclonal

## Ig Type

Rabbit IgG

## Applications

ELISA, WB, IP

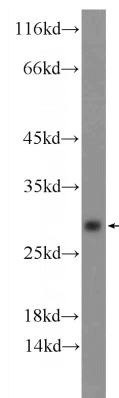
## Dilutions

Recommended Dilution:

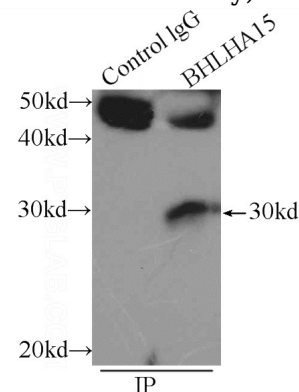
WB: 1:200-1:1000

IP: 1:200-1:1000

## Validations



mouse liver tissue were subjected to SDS PAGE followed by western blot with Catalog No:117136(BHLHA15 Antibody) at dilution of



1:300

IP Result of anti-BHLHA15 (IP:Catalog No:117136, 3ug; Detection:Catalog No:117136 1:300) with mouse liver tissue lysate 6800ug.