

# Beta sarcoglycan antibody



Catalog Number: 108483

## Product name

Beta sarcoglycan antibody

## Specificity

Human, Mouse, Rat; other species not tested.

## Antibody description

Beta sarcoglycan Rabbit Polyclonal antibody. Positive WB detected in MCF7 cells, human placenta tissue, mouse heart tissue, mouse pancreas tissue. Observed molecular weight by Western-blot: 45-48kd

## Preparation

This antibody was obtained by immunization of Beta sarcoglycan recombinant protein (Accession Number: NM\_000232). Purification method: Antigen affinity purified.

## Formulation

PBS with 0.02% sodium azide and 50% glycerol pH 7.3.

## Storage

Store at -20°C. DO NOT ALIQUOT

## Clonality

Polyclonal

## Ig Type

Rabbit IgG

## Applications

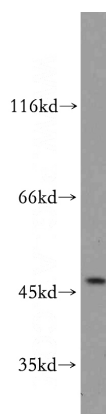
ELISA, WB

## Dilutions

Recommended Dilution:

WB: 1:200-1:2000

## Validations



MCF7 cells were subjected to SDS PAGE followed by western blot with Catalog No:117128(SGCB antibody) at dilution of 1:300