

# BMP2 antibody

Catalog Number: 108461

## Product name

BMP2 antibody

Recommended Dilution:

WB: 1:500-1:5000

## Specificity

Human, Mouse, Rat, Pig; other species not tested.

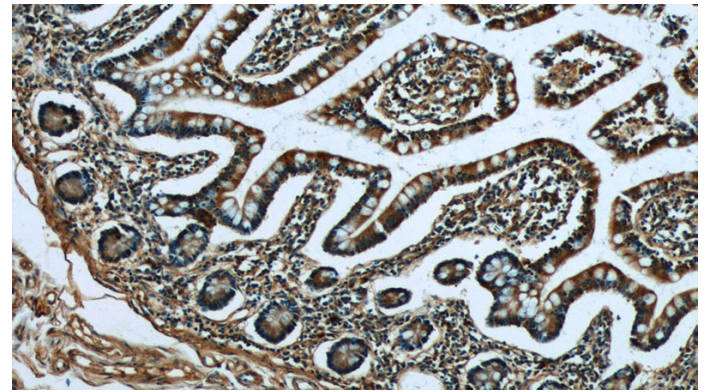
IHC: 1:20-1:200

IF: 1:50-1:500

## Antibody description

BMP2 Rabbit Polyclonal antibody. Positive WB detected in HeLa cells, HL-60 cells, HT-1080 cells, mouse lung tissue, PC-13 cells, Sp2/0 cells. Positive IHC detected in human small intestine tissue, human colon tissue, human heart tissue, human lung tissue. Positive IF detected in HeLa cells. Observed molecular weight by Western-blot: 45 kDa

## Validations



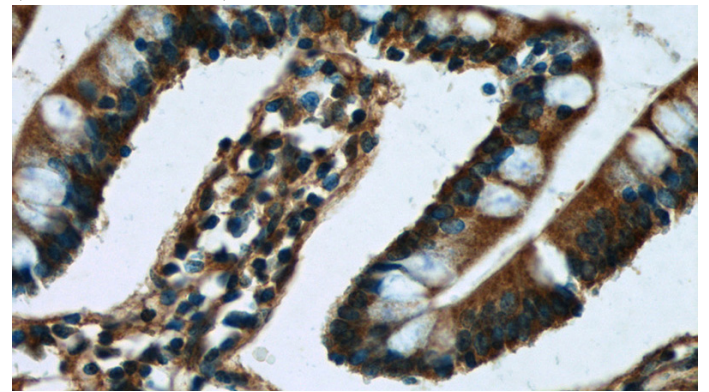
## Preparation

This antibody was obtained by immunization of BMP2 recombinant protein (Accession Number: BC069214). Purification method: Antigen affinity purified.

Immunohistochemistry of paraffin-embedded human small intestine tissue slide using Catalog No:117196(BMP2 Antibody) at dilution of 1:50 (under 10x lens)

## Formulation

PBS with 0.02% sodium azide and 50% glycerol pH 7.3.



## Storage

Store at -20°C. DO NOT ALIQUOT

## Clonality

Polyclonal

## Ig Type

Rabbit IgG

## Applications

ELISA, WB, IHC, IF

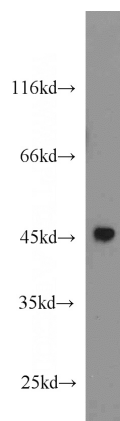
## Dilutions

Immunohistochemistry of paraffin-embedded human small intestine tissue slide using Catalog No:117196(BMP2 Antibody) at dilution of 1:50

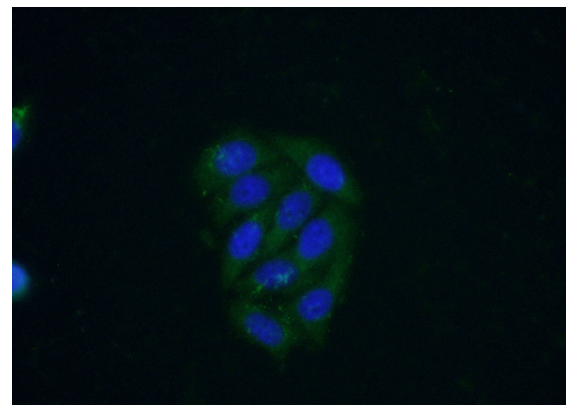
# BMP2 antibody

Catalog Number: 108461

---



(under 40x lens)



Immunofluorescent analysis of (-20oc Ethanol) fixed HeLa cells using Catalog No:117196(BMP2 Antibody) at dilution of 1:50 and Alexa Fluor 488-conjugated AffiniPure Goat Anti-Rabbit IgG(H+L)

HeLa cells were subjected to SDS PAGE followed by western blot with Catalog No:117196(BMP2 antibody) at dilution of 1:1000