

# BMI1 antibody

Catalog Number: 108458

## Product name

BMI1 antibody

WB: 1:500-1:5000

IP: 1:200-1:2000

## Specificity

Human, Mouse; other species not tested.

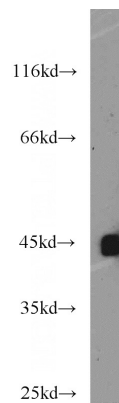
IHC: 1:20-1:200

IF: 1:20-1:200

## Antibody description

BMI1 Rabbit Polyclonal antibody. Positive IF detected in HepG2 cells. Positive IHC detected in human liver cancer tissue. Positive IP detected in U-937 cells. Positive WB detected in U-937 cells, K-562 cells, mouse brain tissue, NCCIT cell. Observed molecular weight by Western-blot: 43-45 kDa

## Validations



## Preparation

This antibody was obtained by immunization of BMI1 recombinant protein (Accession Number: NM\_005180). Purification method: Antigen affinity purified.

U-937 cells were subjected to SDS PAGE followed by western blot with Catalog No:117193(BMI1 antibody) at dilution of 1:1000

## Formulation

PBS with 0.02% sodium azide and 50% glycerol pH 7.3.

## Storage

Store at -20°C. DO NOT ALIQUOT

## Clonality

Polyclonal

## Ig Type

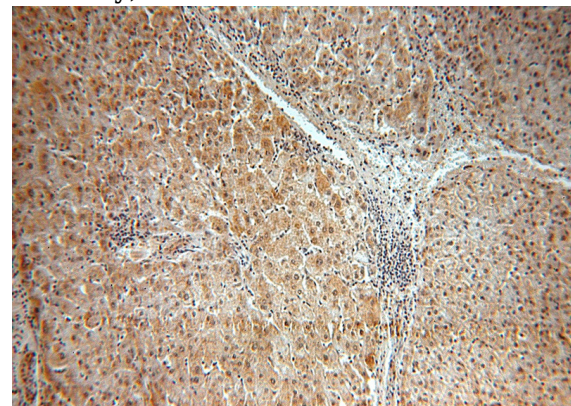
Rabbit IgG

## Applications

ELISA, WB, IHC, IF, IP

## Dilutions

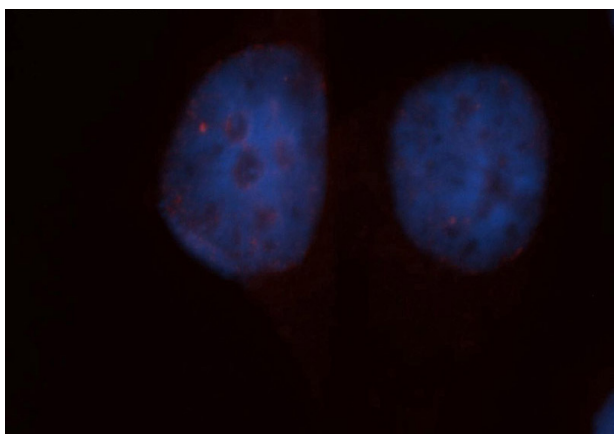
Recommended Dilution:



Immunohistochemical of paraffin-embedded human liver cancer using Catalog No:117193(BMI1 antibody) at dilution of 1:50 (under 10x lens)

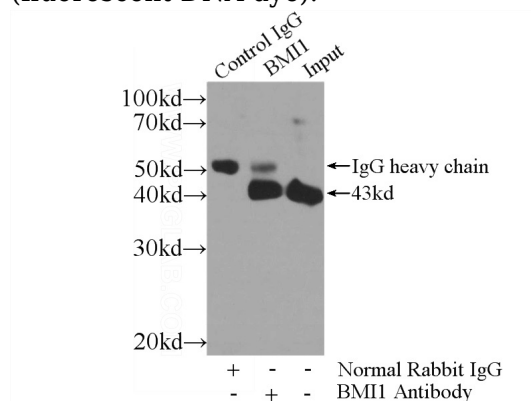
# BMI1 antibody

Catalog Number: 108458



Immunofluorescent analysis of HepG2 cells, using Catalog No:117193 and Rhodamine-labeled goat anti-rabbit IgG (red). Blue pseudocolor = DAPI

(fluorescent DNA dye).



IP Result of anti-BMI1 (IP:Catalog No:117193, 4ug; Detection:Catalog No:117193 1:500) with U-937 cells lysate 4000ug.