

BLVRB antibody

Catalog Number: 108456

Product name

BLVRB antibody

Specificity

Human, Mouse, Rat; other species not tested.

Antibody description

BLVRB Rabbit Polyclonal antibody. Positive WB detected in HepG2 cells, HeLa cells, human liver tissue, rat liver tissue. Positive IHC detected in human heart tissue, human liver tissue. Observed molecular weight by Western-blot: 22-27 kDa

Preparation

This antibody was obtained by immunization of BLVRB recombinant protein (Accession Number: NM_000713). Purification method: Antigen affinity purified.

Formulation

PBS with 0.02% sodium azide and 50% glycerol pH 7.3.

Storage

Store at -20°C. DO NOT ALIQUOT

Clonality

Polyclonal

Ig Type

Rabbit IgG

Applications

ELISA, WB, IHC

Dilutions

Recommended Dilution:

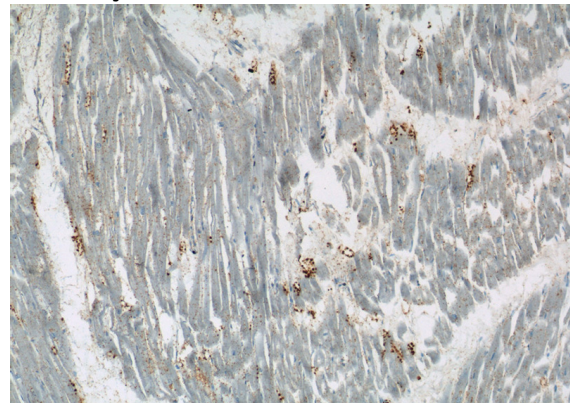
WB: 1:500-1:5000

IHC: 1:20-1:200

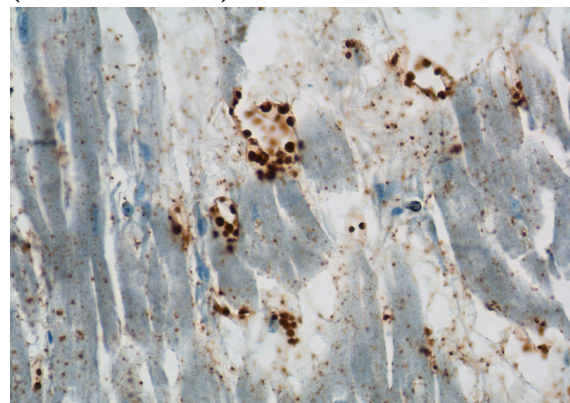
Validations



HepG2 cells were subjected to SDS PAGE followed by western blot with Catalog No:117191(BLVRB antibody) at dilution of 1:500



Immunohistochemistry of paraffin-embedded human heart tissue slide using Catalog No:117191(BLVRB Antibody) at dilution of 1:50 (under 10x lens)



Immunohistochemistry of paraffin-embedded human heart tissue slide using Catalog

BLVRB antibody



Catalog Number: 108456

No:117191(BLVRB Antibody) at dilution of 1:50 (under 40x lens)