

# BLOC1S1-Specific antibody



Catalog Number: 108453

## Product name

BLOC1S1-Specific antibody

IP: 1:500-1:5000

IHC: 1:20-1:200

## Specificity

Human, Mouse, Rat; other species not tested.

## Antibody description

BLOC1S1-Specific Rabbit Polyclonal antibody. Positive IHC detected in human small intestine tissue. Positive IP detected in mouse brain tissue. Positive WB detected in human brain tissue, mouse brain tissue, rat brain tissue. Observed molecular weight by Western-blot: 14-17 kDa

## Preparation

This antibody was obtained by immunization of Peptide (Accession Number: NM\_001487). Purification method: Antigen affinity purified.

## Formulation

PBS with 0.02% sodium azide and 50% glycerol pH 7.3.

## Storage

Store at -20°C. DO NOT ALIQUOT

## Clonality

Polyclonal

## Ig Type

Rabbit IgG

## Applications

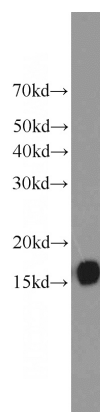
ELISA, WB, IHC, IP

## Dilutions

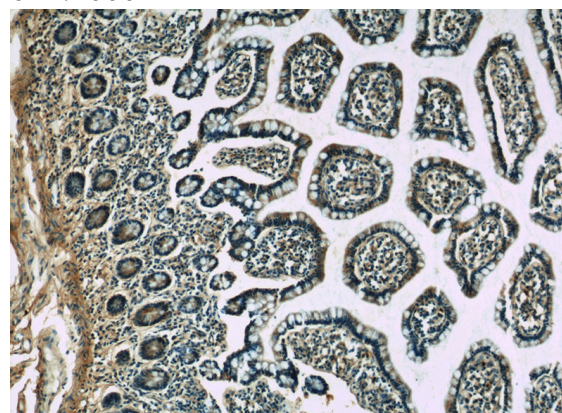
Recommended Dilution:

WB: 1:500-1:5000

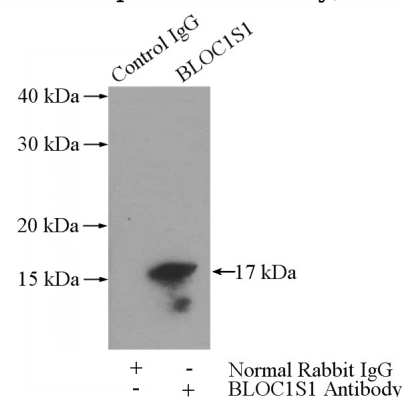
## Validations



human brain tissue were subjected to SDS PAGE followed by western blot with Catalog No:117188(BLOC1S1-Specific antibody) at dilution of 1:1000



Immunohistochemistry of paraffin-embedded human small intestine slide using Catalog No:117188(BLOC1S1-Specific Antibody) at dilution



of 1:50

# BLOC1S1-Specific antibody



Catalog Number: 108453

---

IP Result of anti-BLoc1S1-Specific (IP:Catalog

No:117188, 3ug; Detection:Catalog No:117188  
1:1000) with mouse brain tissue lysate 4000ug.