

# BCL3 antibody

Catalog Number: 108428

## Product name

BCL3 antibody

IP: 1:200-1:2000

IHC: 1:20-1:200

## Specificity

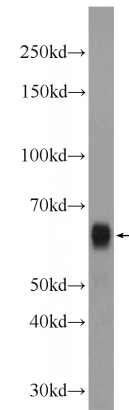
Human; other species not tested.

IF: 1:20-1:200

## Antibody description

BCL3 Rabbit Polyclonal antibody. Positive IP detected in HEK-293 cells. Positive WB detected in HEK-293 cells, A549 cells. Positive IHC detected in human lymphoma tissue. Positive IF detected in HepG2 cells. Observed molecular weight by Western-blot: 48-60 kDa

## Validations



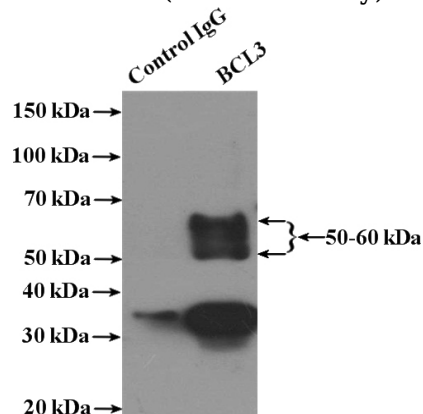
## Preparation

This antibody was obtained by immunization of BCL3 recombinant protein (Accession Number: BC064993). Purification method: Antigen Affinity purified.

HEK-293 cells were subjected to SDS PAGE followed by western blot with Catalog No:117101(BCL3 Antibody) at dilution of 1:600

## Formulation

PBS with 0.02% sodium azide and 50% glycerol pH 7.3.



## Storage

Store at -20°C. DO NOT ALIQUOT

## Clonality

Polyclonal

## Ig Type

Rabbit IgG

## Applications

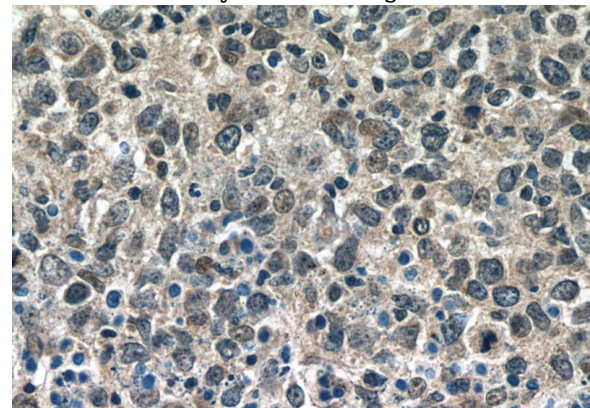
ELISA, WB, IHC, IF, IP

## Dilutions

Recommended Dilution:

WB: 1:200-1:2000

IP Result of anti-BCL3 (IP:Catalog No:117101, 4ug; Detection:Catalog No:117101 1:600) with HEK-293 cells lysate 3000ug.

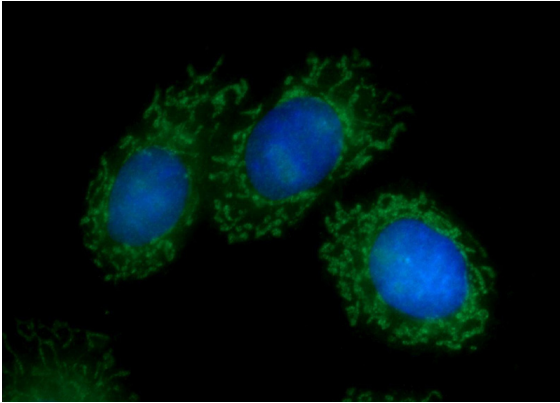


# BCL3 antibody

Catalog Number: 108428

---

Immunohistochemistry of paraffin-embedded human lymphoma tissue slide using Catalog No:117101(BCL3 Antibody) at dilution of 1:50 (under 40x lens)



Immunofluorescent analysis of HepG2 cells using Catalog No:117101(BCL3 Antibody) at dilution of 1:50 and Alexa Fluor 488-conjugated AffiniPure Goat Anti-Rabbit IgG(H+L)