

BCL2L13 antibody



Catalog Number: 108425

Product name

BCL2L13 antibody

IP: 1:500-1:5000

IHC: 1:20-1:200

Specificity

Human, Mouse, Rat; other species not tested.

IF: 1:10-1:100

Antibody description

BCL2L13 Rabbit Polyclonal antibody. Positive IF detected in HepG2 cells. Positive IHC detected in human pancreas tissue. Positive WB detected in Jurkat cells, C6 cells, HeLa cells, K-562 cells. Positive IP detected in mouse heart tissue. Observed molecular weight by Western-blot: 85kd

Preparation

This antibody was obtained by immunization of BCL2L13 recombinant protein (Accession Number: BC003032). Purification method: Antigen affinity purified.

Formulation

PBS with 0.02% sodium azide and 50% glycerol pH 7.3.

Storage

Store at -20°C. DO NOT ALIQUOT

Clonality

Polyclonal

Ig Type

Rabbit IgG

Applications

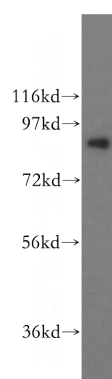
ELISA, WB, IHC, IF, IP

Dilutions

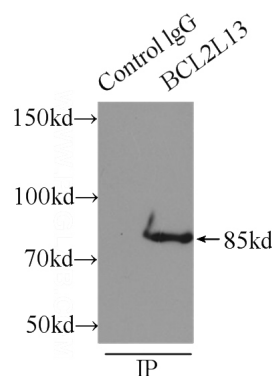
Recommended Dilution:

WB: 1:500-1:5000

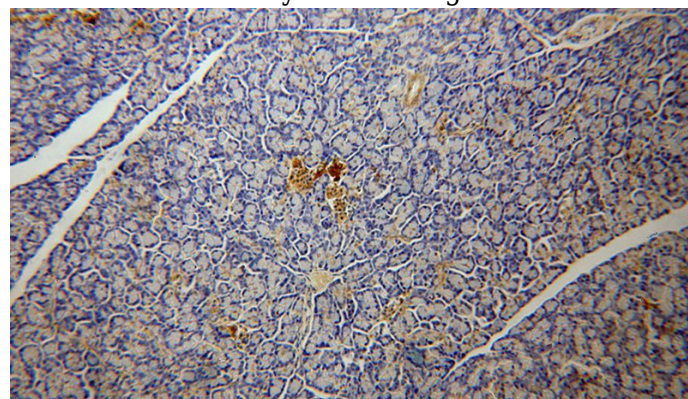
Validations



Jurkat cells were subjected to SDS PAGE followed by western blot with Catalog No:117098(BCL2L13 antibody) at dilution of 1:500



IP Result of anti-BCL2L13 (IP:Catalog No:117098, 3ug; Detection:Catalog No:117098 1:100) with mouse heart tissue lysate 8000ug.

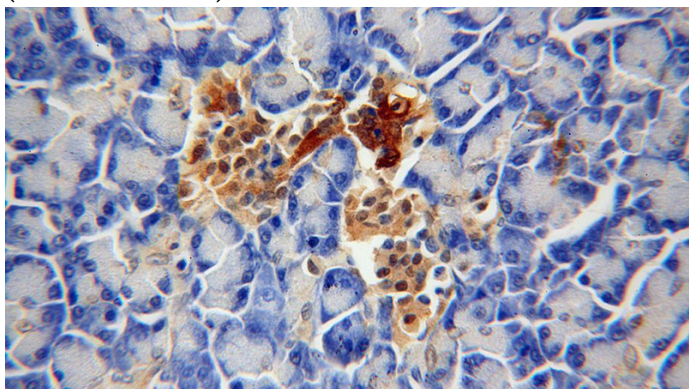


BCL2L13 antibody

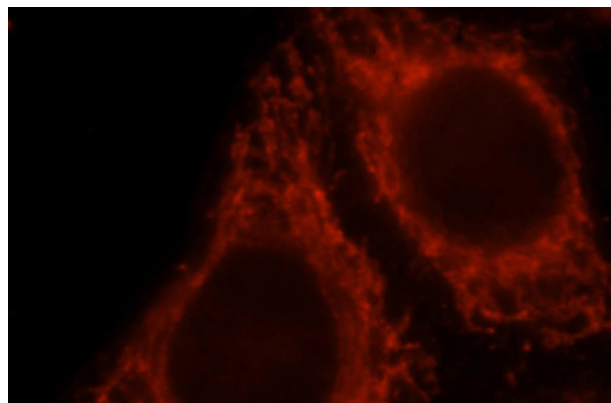


Catalog Number: 108425

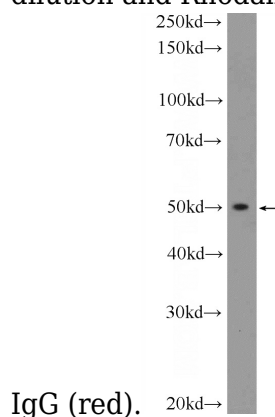
Immunohistochemical of paraffin-embedded human pancreas using Catalog No:117098(BCL2L13 antibody) at dilution of 1:100 (under 10x lens)



Immunohistochemical of paraffin-embedded human pancreas using Catalog No:117098(BCL2L13 antibody) at dilution of 1:100 (under 40x lens)



Immunofluorescent analysis of HepG2 cells, using BCL2L13 antibody Catalog No:117098 at 1:25 dilution and Rhodamine-labeled goat anti-rabbit



C6 cells were subjected to SDS PAGE followed by western blot with Catalog No:117098(BCL2L13 Antibody) at dilution of 1:600