

# BAG1 antibody

Catalog Number: 108406

## Product name

BAG1 antibody

## Specificity

Human, Mouse, Rat; other species not tested.

## Antibody description

BAG1 Rabbit Polyclonal antibody. Positive IF detected in HeLa cells, MCF-7 cells. Positive IHC detected in human testis tissue, human ovary tissue. Positive WB detected in HeLa cells, HEK-293 cells, HL-60 cells, HT-1080 cells, Jurkat cells, MCF7 cells, RAW264.7 cells, UV treated HeLa cells. Positive IP detected in HeLa cells. Observed molecular weight by Western-blot: 50-55 kDa, 30-33 kDa

## Preparation

This antibody was obtained by immunization of BAG1 recombinant protein (Accession Number: BC014774). Purification method: Antigen affinity purified.

## Formulation

PBS with 0.02% sodium azide and 50% glycerol pH 7.3.

## Storage

Store at -20°C. DO NOT ALIQUOT

## Clonality

Polyclonal

## Ig Type

Rabbit IgG

## Applications

ELISA, WB, IHC, IF, IP

## Dilutions

Recommended Dilution:

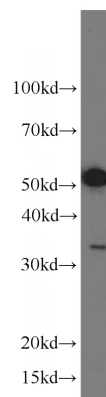
WB: 1:200-1:2000

IP: 1:200-1:2000

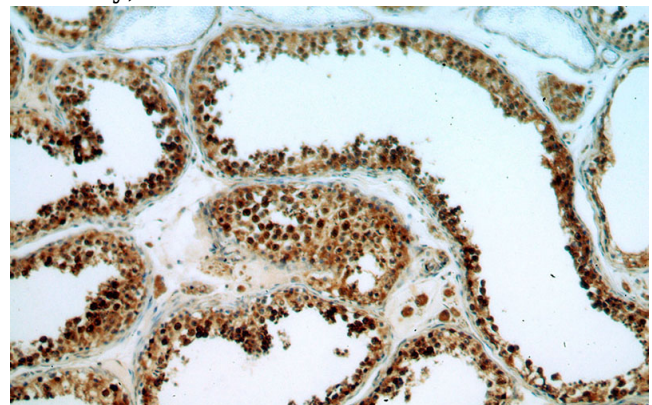
IHC: 1:20-1:200

IF: 1:10-1:100

## Validations



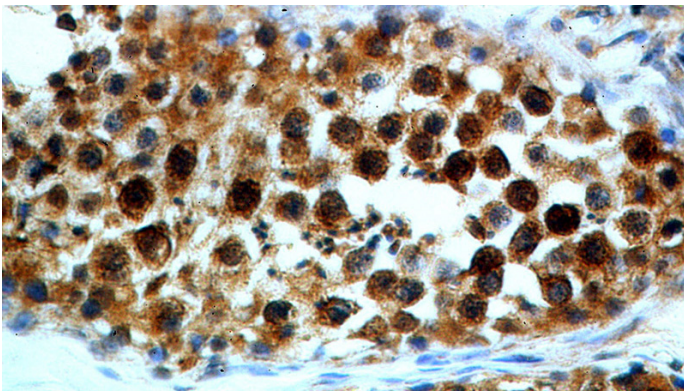
HeLa cells were subjected to SDS PAGE followed by western blot with Catalog No:108406(BAG1 antibody) at dilution of 1:500



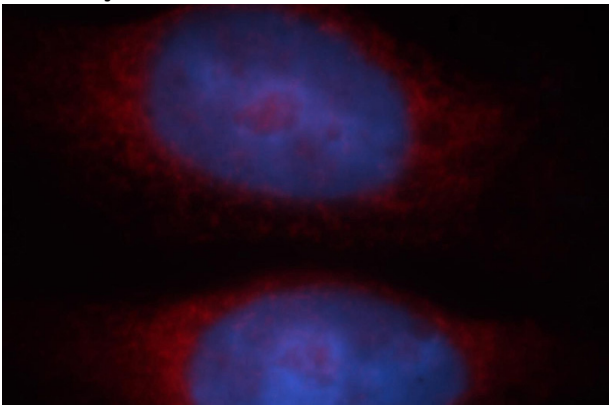
Immunohistochemical of paraffin-embedded human testis using Catalog No:108406(BAG1 antibody) at dilution of 1:50 (under 10x lens)

# BAG1 antibody

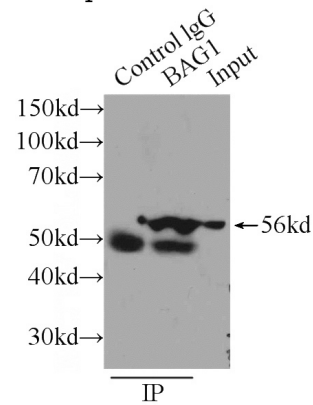
Catalog Number: 108406



Immunohistochemical of paraffin-embedded human testis using Catalog No:108406(BAG1 antibody) at dilution of 1:50 (under 40x lens)



Immunofluorescent analysis of HeLa cells, using BAG1 antibody Catalog No:108406 at 1:25 dilution and Rhodamine-labeled goat anti-rabbit IgG (red). Blue pseudocolor = DAPI (fluorescent DNA dye).



IP Result of anti-BAG1 (IP:Catalog No:108406, 3ug; Detection:Catalog No:108406 1:500) with HeLa cells lysate 3440ug.