

# BAF170 antibody



Catalog Number: 108405

## Product name

BAF170 antibody

IP: 1:200-1:2000

IHC: 1:20-1:200

## Specificity

Human, Mouse, Rat; other species not tested.

IF: 1:10-1:100

## Antibody description

BAF170 Rabbit Polyclonal antibody. Positive IF detected in HepG2 cells. Positive IHC detected in human medulloblastoma tissue. Positive IP detected in HeLa cells. Positive WB detected in HeLa cells, A431 cells. Observed molecular weight by Western-blot: 170 kDa

## Preparation

This antibody was obtained by immunization of BAF170 recombinant protein (Accession Number: NM\_139067). Purification method: Antigen affinity purified.

## Formulation

PBS with 0.1% sodium azide and 50% glycerol pH 7.3.

## Storage

Store at -20°C. DO NOT ALIQUOT

## Clonality

Polyclonal

## Ig Type

Rabbit IgG

## Applications

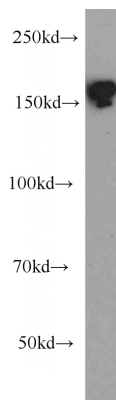
ELISA, WB, IHC, IF, IP

## Dilutions

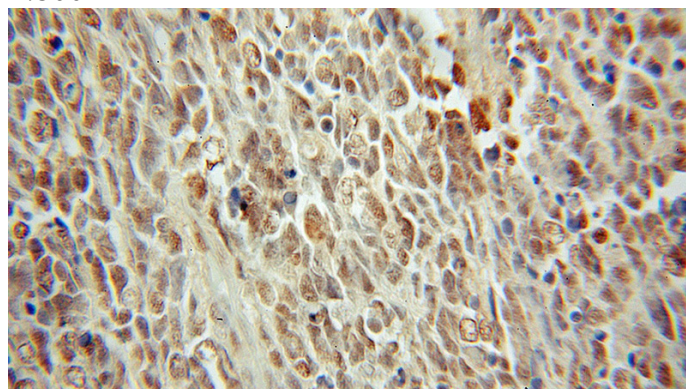
Recommended Dilution:

WB: 1:200-1:2000

## Validations



HeLa cells were subjected to SDS PAGE followed by western blot with Catalog No:108405(SMARCC2 antibody) at dilution of 1:500

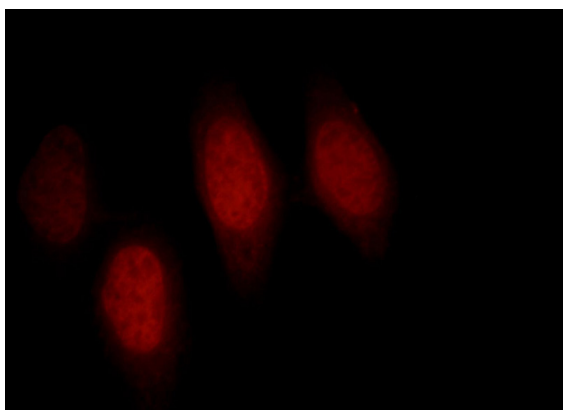


Immunohistochemical of paraffin-embedded human medulloblastoma using Catalog No:108405(SMARCC2 antibody) at dilution of 1:50 (under 10x lens)

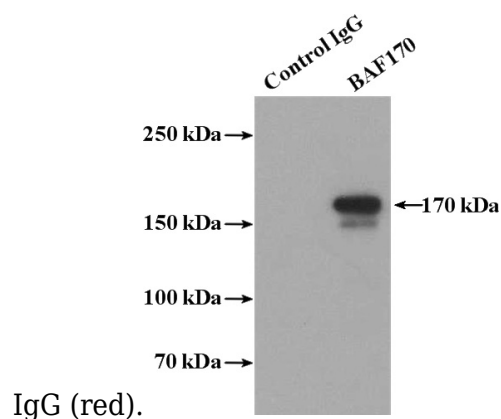
# BAF170 antibody



Catalog Number: 108405



Immunofluorescent analysis of HepG2 cells, using SMARCC2 antibody Catalog No:108405 at 1:25 dilution and Rhodamine-labeled goat anti-rabbit



IgG (red).

IP Result of anti-BAF170 (IP:Catalog No:108405, 4ug; Detection:Catalog No:108405 1:700) with HeLa cells lysate 3200ug.