

# BAAT antibody

Catalog Number: 108400

## Product name

BAAT antibody

IHC: 1:20-1:200

IF: 1:10-1:100

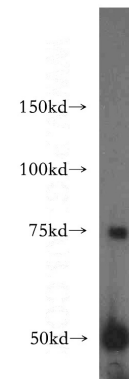
## Specificity

Human; other species not tested.

## Validations

## Antibody description

BAAT Rabbit Polyclonal antibody. Positive IHC detected in human hepat°Cirrhosis tissue. Positive IF detected in HepG2 cells. Positive WB detected in human liver tissue. Observed molecular weight by Western-blot: 50kd



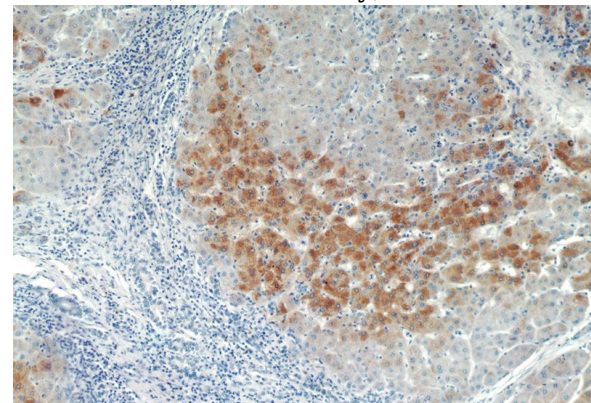
## Preparation

This antibody was obtained by immunization of BAAT recombinant protein (Accession Number: NM\_001374715). Purification method: Antigen affinity purified.

human liver tissue were subjected to SDS PAGE followed by western blot with Catalog No:108400(BAAT antibody) at dilution of 1:500

## Formulation

PBS with 0.02% sodium azide and 50% glycerol pH 7.3.



## Storage

Store at -20°C. DO NOT ALIQUOT

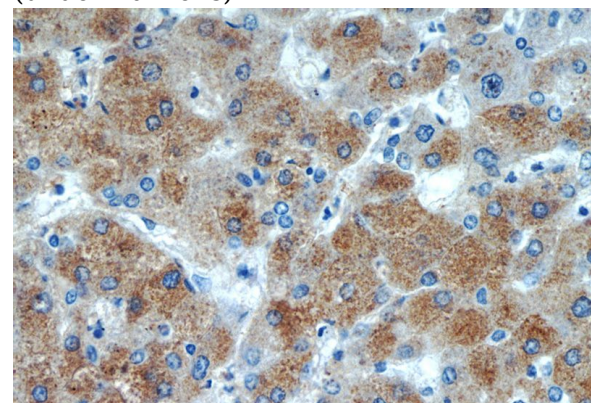
## Clonality

Polyclonal

Immunohistochemistry of paraffin-embedded human hepatocirrhosis tissue slide using Catalog No:108400(BAAT Antibody) at dilution of 1:100 (under 10x lens)

## Ig Type

Rabbit IgG



## Applications

ELISA, WB, IF, IHC

## Dilutions

Recommended Dilution:

WB: 1:200-1:2000

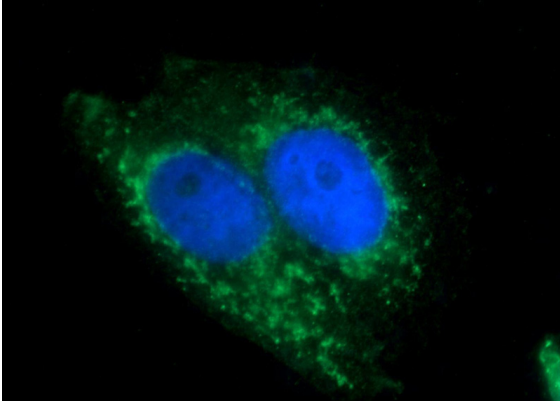
Immunohistochemistry of paraffin-embedded

# BAAT antibody

Catalog Number: 108400

---

human hepatocirrhosis tissue slide using Catalog No:108400(BAAT Antibody) at dilution of 1:100 (under 40x lens)



Immunofluorescent analysis of HepG2 cells using Catalog No:108400(BAAT Antibody) at dilution of 1:25 and Alexa Fluor 488-conjugated AffiniPure Goat Anti-Rabbit IgG(H+L)