

BCL10 antibody



Catalog Number: 108387

Product name

BCL10 antibody

Specificity

human, mouse; other species not tested.

Antibody description

BCL10 Rabbit Polyclonal antibody. Positive WB detected in mouse ovary tissue, human ovary cancer. Positive IHC detected in human lung cancer. Observed molecular weight by Western-blot: 32kd

Preparation

This antibody was obtained by immunization of BCL10 recombinant protein (Accession Number: NM_003921). Purification method: Antigen affinity purified.

Formulation

PBS with 0.1% sodium azide and 50% glycerol pH 7.3.

Storage

Store at -20°C. DO NOT ALIQUOT

Clonality

Polyclonal

Ig Type

Rabbit IgG

Applications

ELISA, WB, IHC

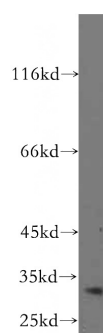
Dilutions

Recommended Dilution:

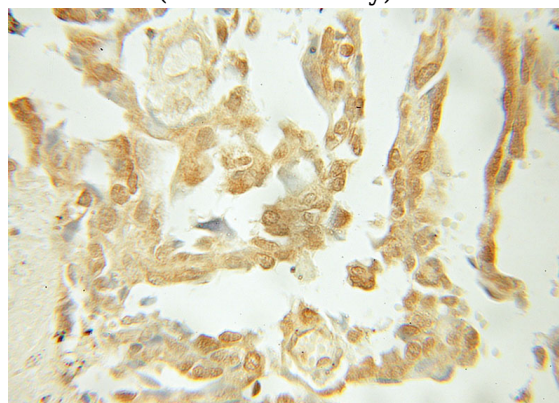
WB: 1:200-1:2000

IHC: 1:20-1:200

Validations



mouse ovary tissue were subjected to SDS PAGE followed by western blot with Catalog No:108387(BCL10 antibody) at dilution of 1:500



Immunohistochemical of paraffin-embedded human lung cancer using Catalog No:108387(BCL10 antibody) at dilution of 1:50 (under 40x lens)