

ATP5I antibody



Catalog Number: 108356

Product name

ATP5I antibody

WB: 1:500-1:5000

IHC: 1:20-1:200

Specificity

Human, Mouse, Rat; other species not tested.

Antibody description

ATP5I Rabbit Polyclonal antibody. Positive IHC detected in human liver tissue. Positive WB detected in human liver tissue, HeLa cells, mouse liver tissue, mouse ovary tissue, rat ovary tissue. Observed molecular weight by Western-blot: 8 kDa

Preparation

This antibody was obtained by immunization of ATP5I recombinant protein (Accession Number: NM_007100). Purification method: Antigen affinity purified.

Formulation

PBS with 0.02% sodium azide and 50% glycerol pH 7.3.

Storage

Store at -20°C. DO NOT ALIQUOT

Clonality

Polyclonal

Ig Type

Rabbit IgG

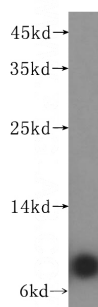
Applications

ELISA, WB, IHC

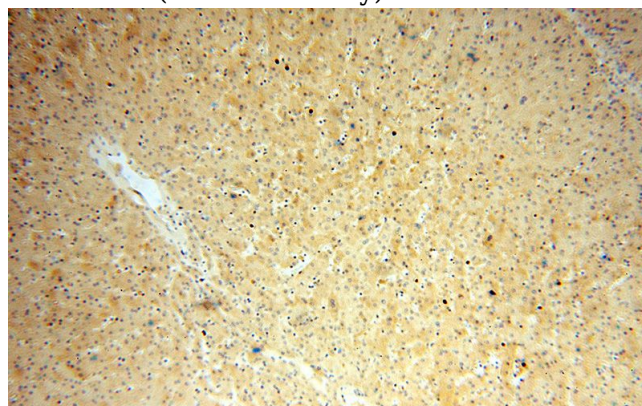
Dilutions

Recommended Dilution:

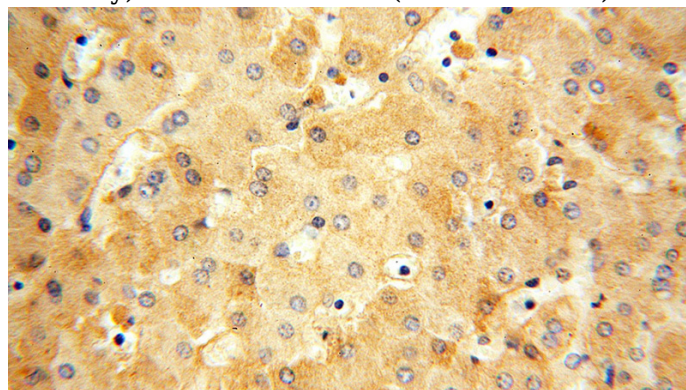
Validations



human liver tissue were subjected to SDS PAGE followed by western blot with Catalog No:108356(ATP5I antibody) at dilution of 1:300



Immunohistochemical of paraffin-embedded human liver using Catalog No:108356(ATP5I antibody) at dilution of 1:50 (under 10x lens)



Immunohistochemical of paraffin-embedded human liver using Catalog No:108356(ATP5I antibody) at dilution of 1:50 (under 40x lens)