

ATP5F1 antibody



Catalog Number: 108353

Product name

ATP5F1 antibody

Specificity

Human, Mouse, Rat; other species not tested.

Antibody description

ATP5F1 Rabbit Polyclonal antibody. Positive IHC detected in human liver tissue, human brain tissue, human heart tissue, human kidney tissue, human skin tissue, human testis tissue. Positive IF detected in Hela cells. Positive WB detected in mouse liver tissue, mouse heart tissue, mouse skeletal muscle tissue. Observed molecular weight by Western-blot: 25kd

Preparation

This antibody was obtained by immunization of ATP5F1 recombinant protein (Accession Number: NM_001688). Purification method: Antigen affinity purified.

Formulation

PBS with 0.02% sodium azide and 50% glycerol pH 7.3.

Storage

Store at -20°C. DO NOT ALIQUOT

Clonality

Polyclonal

Ig Type

Rabbit IgG

Applications

ELISA, WB, IHC, IF

Dilutions

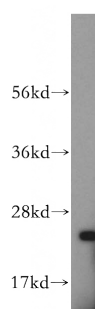
Recommended Dilution:

WB: 1:500-1:5000

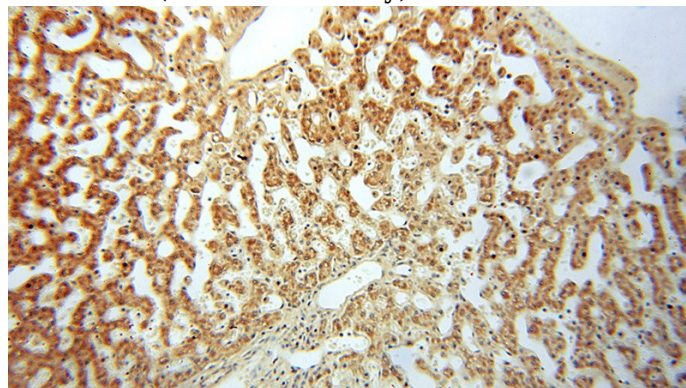
IHC: 1:20-1:200

IF: 1:10-1:100

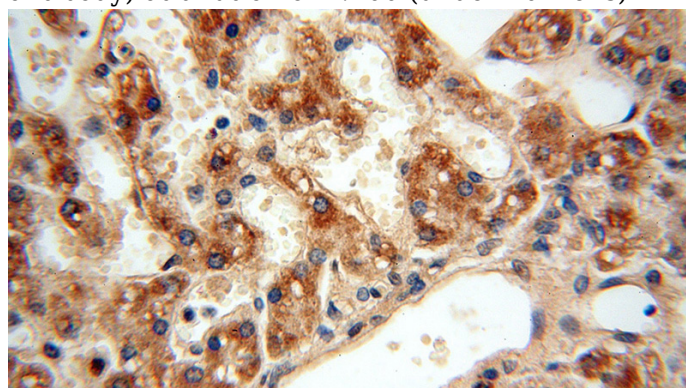
Validations



mouse liver tissue were subjected to SDS PAGE followed by western blot with Catalog No:108353(ATP5F1 antibody) at dilution of 1:1000



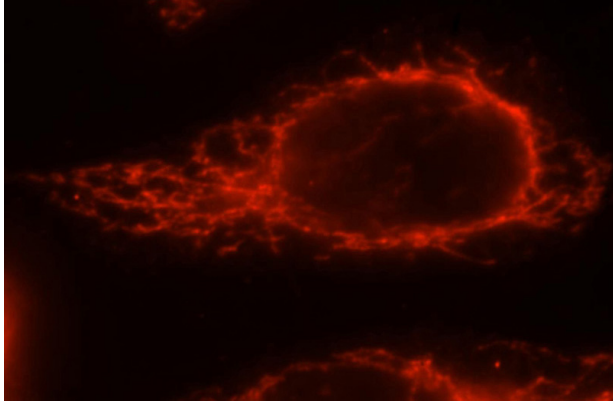
Immunohistochemical of paraffin-embedded human liver using Catalog No:108353(ATP5F1 antibody) at dilution of 1:100 (under 10x lens)



ATP5F1 antibody

Catalog Number: 108353

Immunohistochemical of paraffin-embedded human liver using Catalog No:108353(ATP5F1 antibody) at dilution of 1:100 (under 40x lens)



Immunofluorescent analysis of Hela cells, using ATP5F1 antibody Catalog No:108353 at 1:25 dilution and Rhodamine-labeled goat anti-rabbit IgG (red).