

ATOH1 antibody



Catalog Number: 108335

Product name

ATOH1 antibody

Specificity

Human, Mouse, Rat; other species not tested.

Antibody description

ATOH1 Rabbit Polyclonal antibody. Positive WB detected in Neuro-2a cells, mouse small intestine tissue. Observed molecular weight by Western-blot: 38kd, 45kd

Preparation

This antibody was obtained by immunization of ATOH1 recombinant protein (Accession Number: NM_005172). Purification method: Antigen affinity purified.

Formulation

PBS with 0.02% sodium azide and 50% glycerol pH 7.3.

Storage

Store at -20°C. DO NOT ALIQUOT

Clonality

Polyclonal

Ig Type

Rabbit IgG

Applications

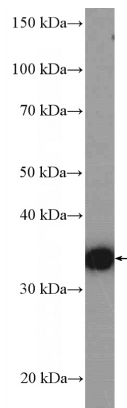
ELISA, WB

Dilutions

Recommended Dilution:

WB: 1:200-1:2000

Validations



Neuro-2a cells were subjected to SDS PAGE followed by western blot with Catalog No:108335(ATOH1 Antibody) at dilution of 1:600