

# ATL1 antibody



Catalog Number: 108331

## Product name

ATL1 antibody

## Specificity

Human, Mouse, Rat; other species not tested.

## Antibody description

ATL1 Rabbit Polyclonal antibody. Positive WB detected in human brain tissue, human cerebellum tissue. Positive IP detected in mouse brain tissue. Observed molecular weight by Western-blot: 55 kDa

## Preparation

This antibody was obtained by immunization of ATL1 recombinant protein (Accession Number: XM\_047431430). Purification method: Antigen affinity purified.

## Formulation

PBS with 0.1% sodium azide and 50% glycerol pH 7.3.

## Storage

Store at -20°C. DO NOT ALIQUOT

## Clonality

Polyclonal

## Ig Type

Rabbit IgG

## Applications

ELISA, WB, IP

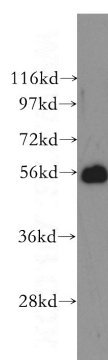
## Dilutions

Recommended Dilution:

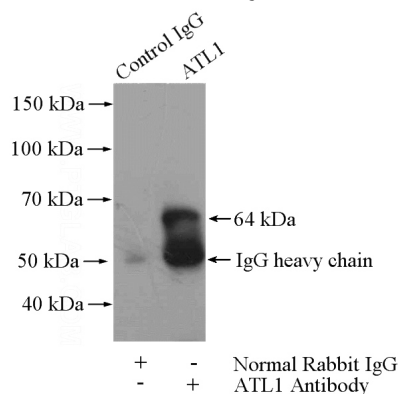
WB: 1:500-1:5000

IP: 1:200-1:2000

## Validations



human brain tissue were subjected to SDS PAGE followed by western blot with Catalog No:108331(ATL1 antibody) at dilution of 1:500



IP Result of anti-ATL1 (IP:Catalog No:108331, 4ug; Detection:Catalog No:108331 1:500) with mouse brain tissue lysate 4000ug.