

# ATPAF1 antibody



Catalog Number: 108320

## Product name

Polyclonal

ATPAF1 antibody

## Ig Type

## Specificity

Rabbit IgG

human, mouse, rat; other species not tested.

## Applications

## Antibody description

ELISA, WB

ATPAF1 Rabbit Polyclonal antibody. Positive WB detected in human heart tissue, human skeletal muscle tissue, mouse kidney tissue, mouse liver tissue. Observed molecular weight by Western-blot: 36kd

## Dilutions

Recommended Dilution:

WB: 1:500-1:5000

## Preparation

## Validations

This antibody was obtained by immunization of ATPAF1 recombinant protein (Accession Number: NM\_001394565). Purification method: Antigen affinity purified.

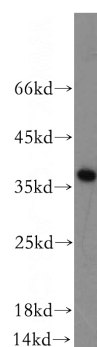
## Formulation

PBS with 0.02% sodium azide and 50% glycerol pH 7.3.

## Storage

Store at -20°C. DO NOT ALIQUOT

## Clonality



human heart tissue were subjected to SDS PAGE followed by western blot with Catalog No:108320(ATPAF1 antibody) at dilution of 1:500