

ATP6V1F antibody



Catalog Number: 108313

Product name

ATP6V1F antibody

Recommended Dilution:

WB: 1:500-1:5000

Specificity

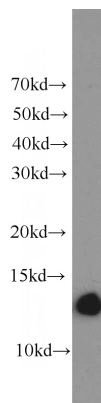
IHC: 1:20-1:200

Human, Mouse; other species not tested.

Antibody description

ATP6V1F Rabbit Polyclonal antibody. Positive FC detected in MCF-7 cells. Positive IHC detected in human testis tissue, human brain tissue, human kidney tissue, human pancreas tissue, human placenta tissue. Positive WB detected in MCF7 cells, HeLa cells, Jurkat cells, mouse liver tissue, mouse skeletal muscle tissue. Observed molecular weight by Western-blot: 14 kDa

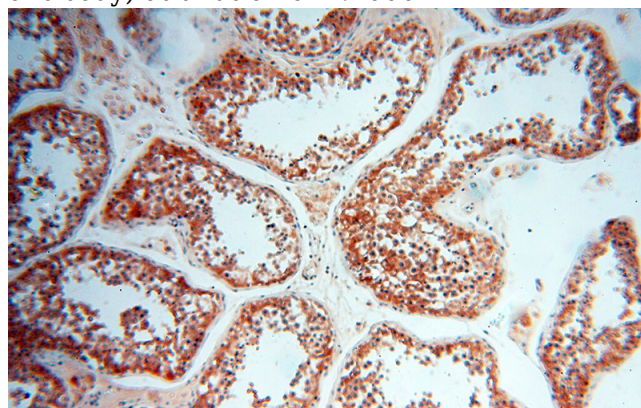
Validations



Preparation

This antibody was obtained by immunization of ATP6V1F recombinant protein (Accession Number: NM_004231). Purification method: Antigen affinity purified.

MCF7 cells were subjected to SDS PAGE followed by western blot with Catalog No:108313(ATP6V1F antibody) at dilution of 1:1000



Formulation

PBS with 0.02% sodium azide and 50% glycerol pH 7.3.

Storage

Store at -20°C. DO NOT ALIQUOT

Clonality

Polyclonal

Ig Type

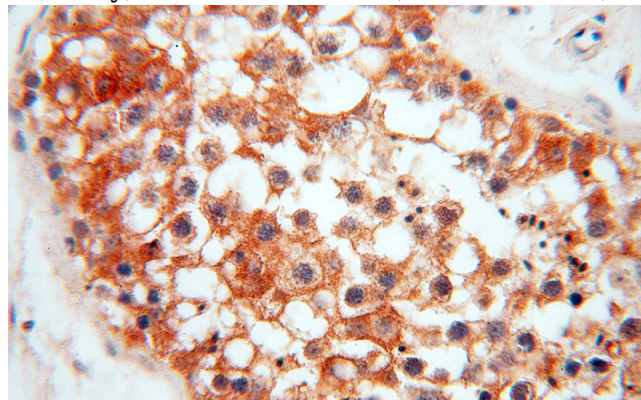
Rabbit IgG

Applications

ELISA, WB, IHC, FC

Dilutions

Immunohistochemical of paraffin-embedded human testis using Catalog No:108313(ATP6V1F antibody) at dilution of 1:50 (under 10x lens)

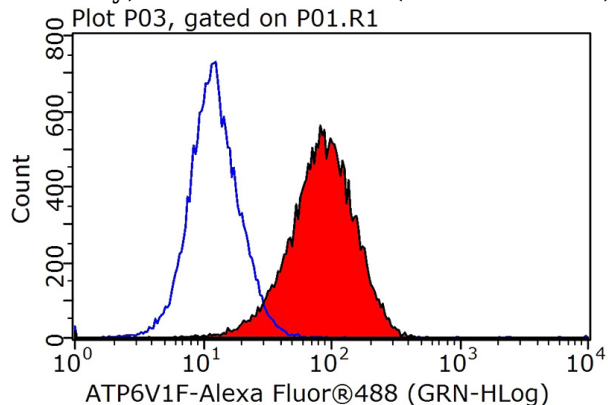


ATP6V1F antibody



Catalog Number: 108313

Immunohistochemical of paraffin-embedded human testis using Catalog No:108313(ATP6V1F antibody) at dilution of 1:50 (under 40x lens)



1X10⁶ MCF-7 cells were stained with 0.2ug ATP6V1F antibody (Catalog No:108313, red) and control antibody (blue). Fixed with 90% MeOH blocked with 3% BSA (30 min). Alexa Fluor 488-conjugated AffiniPure Goat Anti-Rabbit IgG(H+L) with dilution 1:1000.