

# ATP6V1B2 antibody



Catalog Number: 108307

## Product name

ATP6V1B2 antibody

WB: 1:500-1:5000

IP: 1:500-1:5000

## Specificity

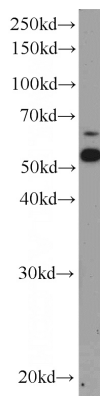
Human, Mouse, Rat; other species not tested.

IHC: 1:20-1:200

## Antibody description

ATP6V1B2 Rabbit Polyclonal antibody. Positive IHC detected in human colon cancer tissue. Positive WB detected in HeLa cells, mouse brain tissue, mouse heart tissue, mouse skeletal muscle tissue. Positive IP detected in mouse brain tissue. Observed molecular weight by Western-blot: 56 kDa, 58 kDa

## Validations



## Preparation

This antibody was obtained by immunization of ATP6V1B2 recombinant protein (Accession Number: NM\_001693). Purification method: Antigen affinity purified.

HeLa cells were subjected to SDS PAGE followed by western blot with Catalog No:108307(ATP6V1B2 antibody) at dilution of 1:3000

## Formulation

PBS with 0.02% sodium azide and 50% glycerol pH 7.3.

## Storage

Store at -20°C. DO NOT ALIQUOT

## Clonality

Polyclonal

## Ig Type

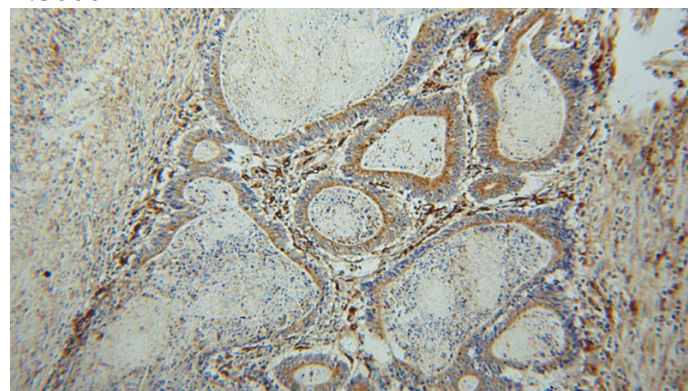
Rabbit IgG

## Applications

ELISA, WB, IHC, IP

## Dilutions

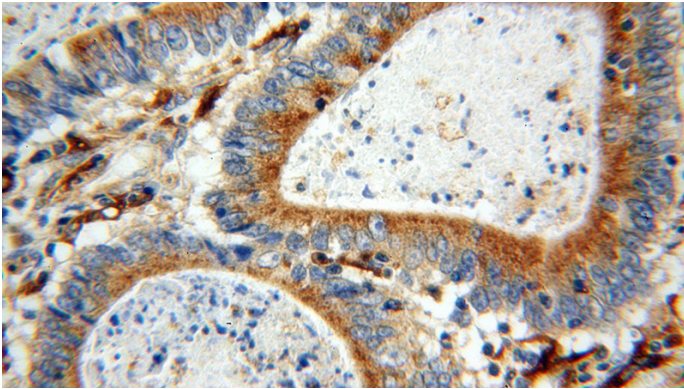
Recommended Dilution:



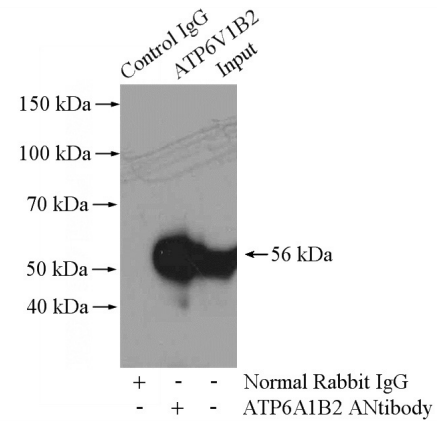
Immunohistochemical of paraffin-embedded human colon cancer using Catalog No:108307(ATP6V1B2 antibody) at dilution of 1:100 (under 10x lens)

# ATP6V1B2 antibody

Catalog Number: 108307



Immunohistochemical of paraffin-embedded human colon cancer using Catalog No:108307(ATP6V1B2 antibody) at dilution of 1:100 (under 40x lens)



IP Result of anti-ATP6V1B2 (IP:Catalog No:108307, 4ug; Detection:Catalog No:108307 1:1000) with mouse brain tissue lysate 4000ug.