

# ATP6V1A antibody

Catalog Number: 108305

## Product name

ATP6V1A antibody

IP: 1:200-1:2000

IHC: 1:20-1:200

## Specificity

Human, Mouse, Rat; other species not tested.

## Antibody description

ATP6V1A Rabbit Polyclonal antibody. Positive WB detected in mouse kidney tissue, HeLa cells, human placenta tissue, K-562 cells. Positive IP detected in HeLa cells. Positive IHC detected in human pancreas tissue. Observed molecular weight by Western-blot: 68 kDa

## Preparation

This antibody was obtained by immunization of ATP6V1A recombinant protein (Accession Number: XM\_047448306). Purification method: Antigen affinity purified.

## Formulation

PBS with 0.02% sodium azide and 50% glycerol pH 7.3.

## Storage

Store at -20°C. DO NOT ALIQUOT

## Clonality

Polyclonal

## Ig Type

Rabbit IgG

## Applications

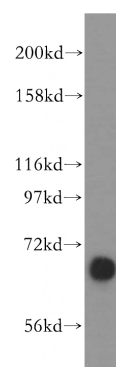
ELISA, WB, IHC, IP

## Dilutions

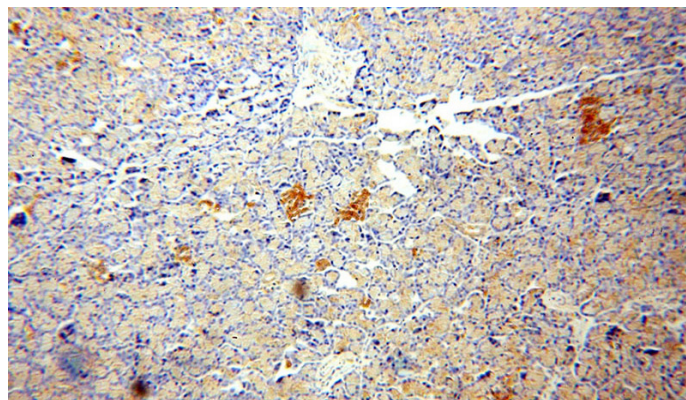
Recommended Dilution:

WB: 1:500-1:5000

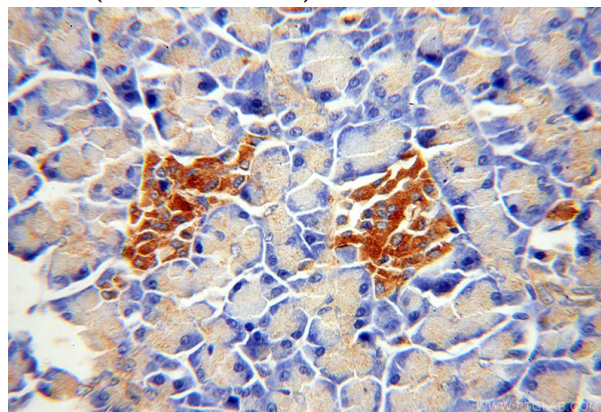
## Validations



mouse kidney tissue were subjected to SDS PAGE followed by western blot with Catalog No:108305(ATP6V1A antibody) at dilution of 1:500



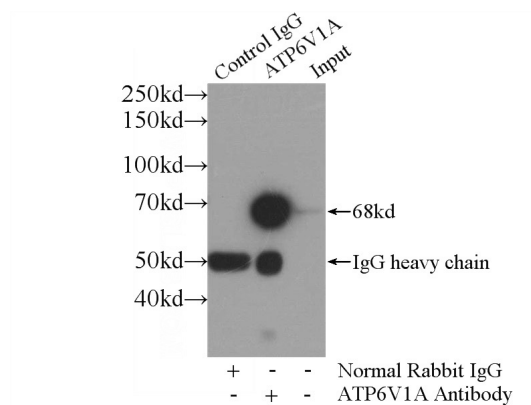
Immunohistochemical of paraffin-embedded human pancreas using Catalog No:108305(ATP6V1A antibody) at dilution of 1:100 (under 10x lens)



# ATP6V1A antibody

Catalog Number: 108305

Immunohistochemical of paraffin-embedded human pancreas using Catalog No:108305(ATP6V1A antibody) at dilution of 1:100 (under 40x lens)



IP Result of anti-ATP6V1A (IP:Catalog No:108305, 4ug; Detection:Catalog No:108305 1:500) with HeLa cells lysate 4000ug.