

ATP6AP1 antibody



Catalog Number: 108302

Product name

ATP6AP1 antibody

Specificity

Human, Mouse, Rat; other species not tested.

Antibody description

ATP6AP1 Rabbit Polyclonal antibody. Positive WB detected in mouse kidney tissue, HeLa cells, HepG2 cells. Positive IHC detected in human kidney tissue. Observed molecular weight by Western-blot: 46-52kd, 61-64kd

Preparation

This antibody was obtained by immunization of ATP6AP1 recombinant protein (Accession Number: NM_001183). Purification method: Antigen affinity purified.

Formulation

PBS with 0.1% sodium azide and 50% glycerol pH 7.3.

Storage

Store at -20°C. DO NOT ALIQUOT

Clonality

Polyclonal

Ig Type

Rabbit IgG

Applications

ELISA, WB, IHC

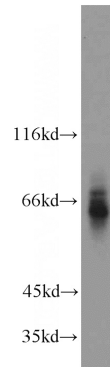
Dilutions

Recommended Dilution:

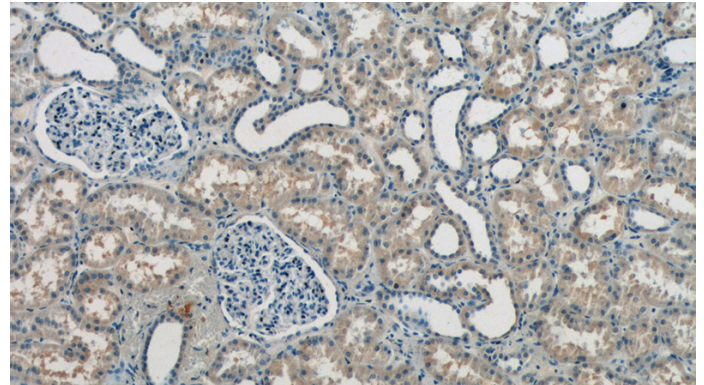
WB: 1:500-1:5000

IHC: 1:20-1:200

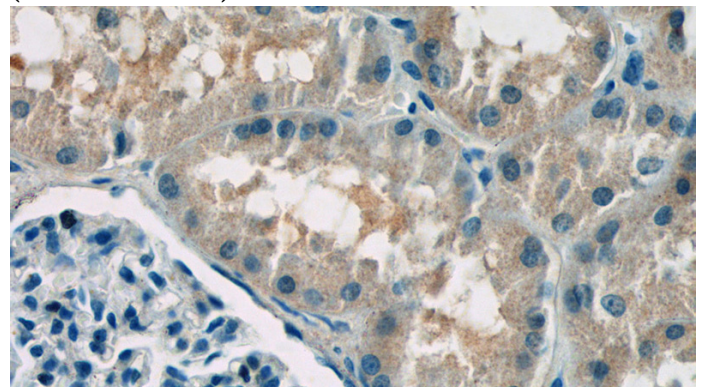
Validations



mouse kidney tissue were subjected to SDS PAGE followed by western blot with Catalog No:108302(ATP6AP1 antibody) at dilution of 1:300



Immunohistochemistry of paraffin-embedded human kidney tissue slide using Catalog No:108302(ATP6AP1 Antibody) at dilution of 1:50 (under 10x lens)



Immunohistochemistry of paraffin-embedded human kidney tissue slide using Catalog No:108302(ATP6AP1 Antibody) at dilution of 1:50

ATP6AP1 antibody



Catalog Number: 108302

(under 40x lens)