

ATP6 antibody

Catalog Number: 108301

Product name

ATP6 antibody

IHC: 1:20-1:200

IF: 1:20-1:200

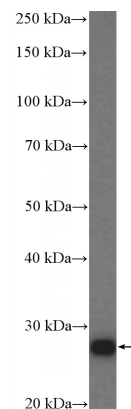
Specificity

Human, Mouse; other species not tested.

Validations

Antibody description

ATP6 Rabbit Polyclonal antibody. Positive IF detected in HepG2 cells. Positive IHC detected in human skeletal muscle tissue, human liver cancer tissue. Positive WB detected in mouse heart tissue, mouse brain tissue. Observed molecular weight by Western-blot: 25-30 kDa



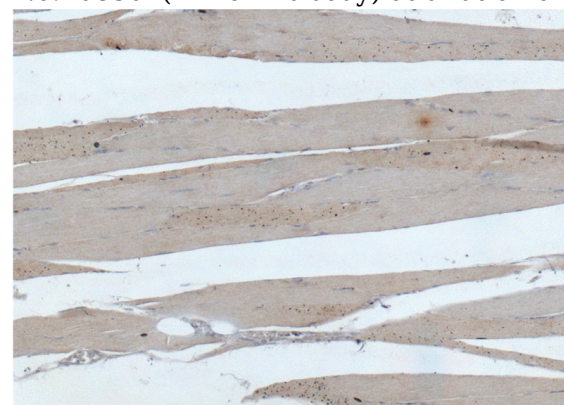
Preparation

This antibody was obtained by immunization of Peptide (Accession Number: J01415). Purification method: Antigen affinity purified.

mouse heart tissue were subjected to SDS PAGE followed by western blot with Catalog No:108301(ATP6 Antibody) at dilution of 1:600

Formulation

PBS with 0.02% sodium azide and 50% glycerol pH 7.3.



Storage

Store at -20°C. DO NOT ALIQUOT

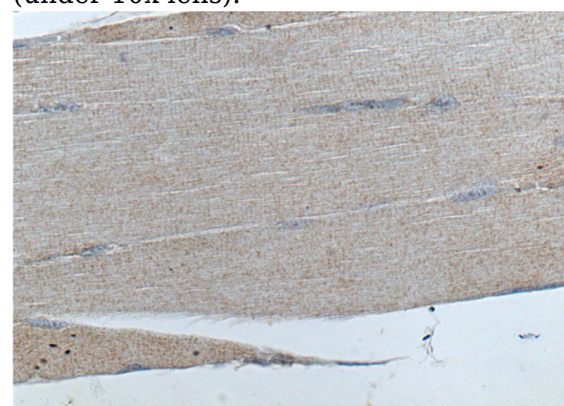
Clonality

Polyclonal

Immunohistochemistry of paraffin-embedded human skeletal muscle tissue slide using Catalog No:108301(ATP6 Antibody) at dilution of 1:200 (under 10x lens).

Ig Type

Rabbit IgG



Applications

ELISA, WB, IF, IHC

Dilutions

Recommended Dilution:

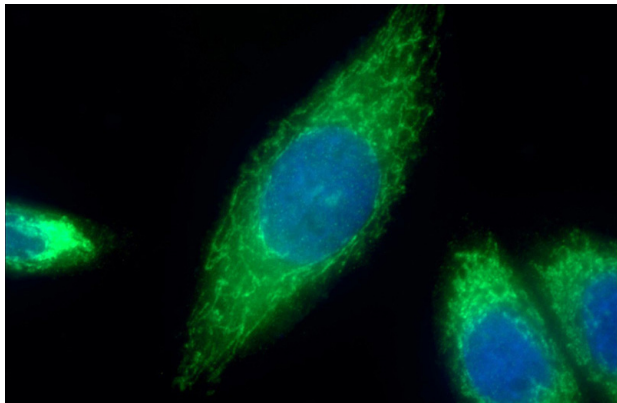
WB: 1:200-1:2000

Immunohistochemistry of paraffin-embedded

ATP6 antibody

Catalog Number: 108301

human skeletal muscle tissue slide using Catalog No:108301(ATP6 Antibody) at dilution of 1:200 (under 40x lens).



Immunofluorescent analysis of (10% Formaldehyde) fixed HepG2 cells using Catalog No:108301(ATP6 Antibody) at dilution of 1:50 and Alexa Fluor 488-conjugated AffiniPure Goat Anti-Rabbit IgG(H+L)