

# ATG2B antibody

Catalog Number: 108294

## Product name

ATG2B antibody

IHC: 1:20-1:200

IF: 1:10-1:100

## Specificity

Human; other species not tested.

## Antibody description

ATG2B Rabbit Polyclonal antibody. Positive IF detected in HepG2 cells. Positive IHC detected in human stomach tissue, human pancreas cancer tissue. Positive WB detected in HeLa cells. Observed molecular weight by Western-blot: 240-250 kDa

## Preparation

This antibody was obtained by immunization of ATG2B recombinant protein (Accession Number: BC015016). Purification method: Antigen affinity purified.

## Formulation

PBS with 0.1% sodium azide and 50% glycerol pH 7.3.

## Storage

Store at -20°C. DO NOT ALIQUOT

## Clonality

Polyclonal

## Ig Type

Rabbit IgG

## Applications

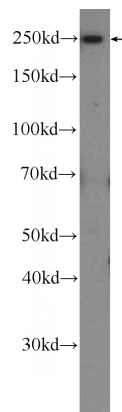
ELISA, WB, IHC, IF

## Dilutions

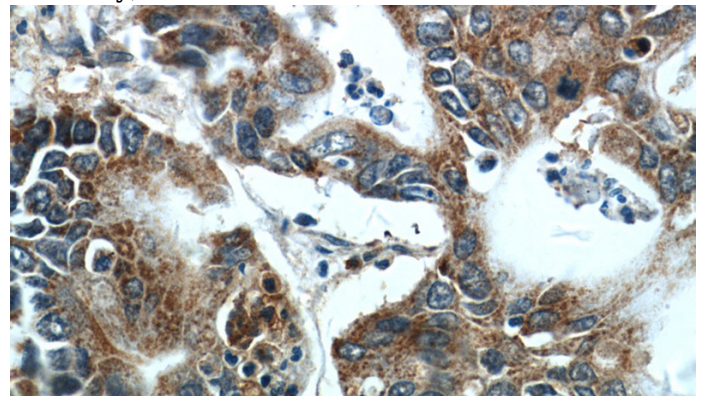
Recommended Dilution:

WB: 1:200-1:2000

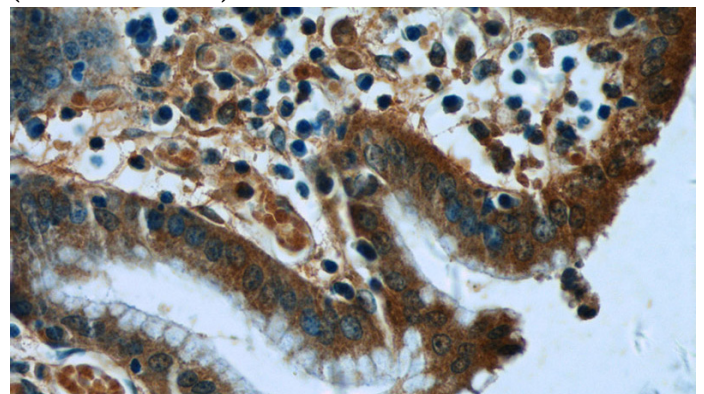
## Validations



HeLa cells were subjected to SDS PAGE followed by western blot with Catalog No:108294(ATG2B Antibody) at dilution of 1:600



Immunohistochemistry of paraffin-embedded human pancreas cancer tissue slide using Catalog No:108294(ATG2B Antibody) at dilution of 1:50 (under 40x lens)



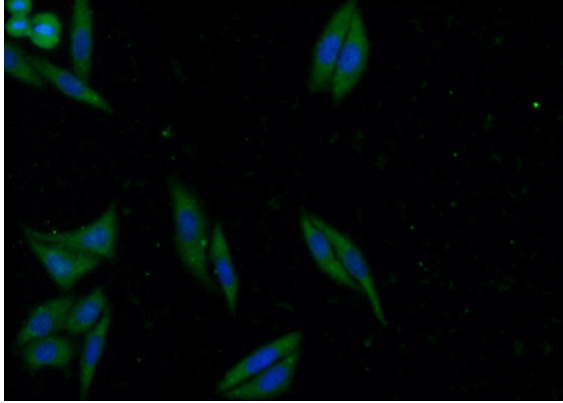
Immunohistochemistry of paraffin-embedded

# ATG2B antibody

Catalog Number: 108294

---

human stomach tissue slide using Catalog No:108294(ATG2B Antibody) at dilution of 1:50 (under 40x lens)



Immunofluorescent analysis of HepG2 cells using Catalog No:108294(ATG2B Antibody) at dilution of 1:25 and Alexa Fluor 488-conjugated AffiniPure Goat Anti-Rabbit IgG(H+L)