

ATG12 antibody



Catalog Number: 108288

Product name

ATG12 antibody

IP: 1:200-1:1000

IHC: 1:20-1:200

Specificity

Human, Mouse; other species not tested.

Antibody description

ATG12 Rabbit Polyclonal antibody. Positive IHC detected in human prostate cancer tissue. Positive IP detected in HEK-293 cells. Positive WB detected in human bladder tissue, UV treated HEK-293 cells. Observed molecular weight by Western-blot: 48-50kd

Preparation

This antibody was obtained by immunization of ATG12 recombinant protein (Accession Number: NM_001277783). Purification method: Antigen affinity purified.

Formulation

PBS with 0.1% sodium azide and 50% glycerol pH 7.3.

Storage

Store at -20°C. DO NOT ALIQUOT

Clonality

Polyclonal

Ig Type

Rabbit IgG

Applications

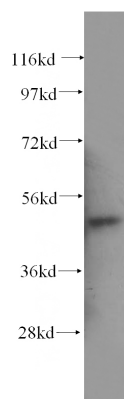
ELISA, WB, IHC, IP

Dilutions

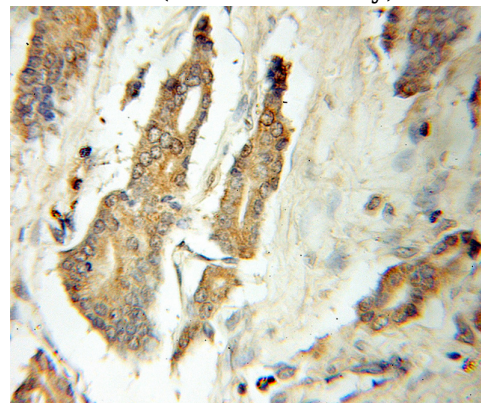
Recommended Dilution:

WB: 1:200-1:2000

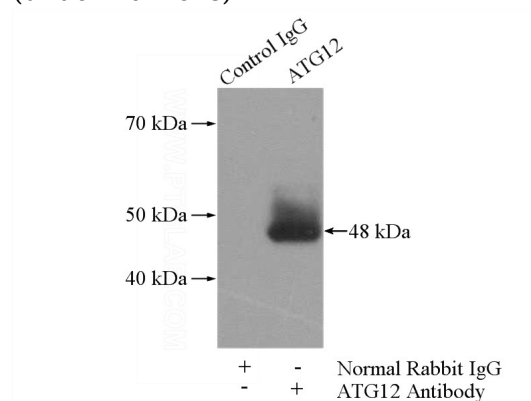
Validations



human bladder tissue were subjected to SDS PAGE followed by western blot with Catalog No:108288(ATG12 antibody) at dilution of 1:500



Immunohistochemical of paraffin-embedded human prostate cancer using Catalog No:108288(ATG12 antibody) at dilution of 1:50 (under 10x lens)



IP Result of anti-ATG12 (IP:Catalog No:108288,

ATG12 antibody



Catalog Number: 108288

4ug; Detection:Catalog No:108288 1:300) with HEK-293 cells lysate 880ug.