

# ATF6B antibody



Catalog Number: 108287

## Product name

ATF6B antibody

IP: 1:500-1:5000

IHC: 1:20-1:200

## Specificity

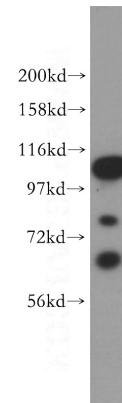
Human, Mouse, Rat; other species not tested.

IF: 1:10-1:100

## Antibody description

ATF6B Rabbit Polyclonal antibody. Positive WB detected in Jurkat cells, human testis tissue. Positive IP detected in Jurkat cells. Positive IHC detected in human brain tissue. Positive IF detected in HepG2 cells. Observed molecular weight by Western-blot: 110 kDa

## Validations



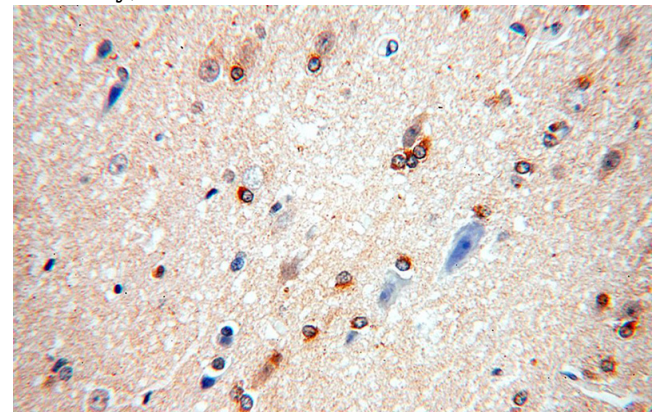
## Preparation

This antibody was obtained by immunization of ATF6B recombinant protein (Accession Number: BC008394). Purification method: Antigen affinity purified.

Jurkat cells were subjected to SDS PAGE followed by western blot with Catalog No:108287(ATF6B antibody) at dilution of 1:1000

## Formulation

PBS with 0.02% sodium azide and 50% glycerol pH 7.3.



## Storage

Store at -20°C. DO NOT ALIQUOT

## Clonality

Polyclonal

## Ig Type

Rabbit IgG

## Applications

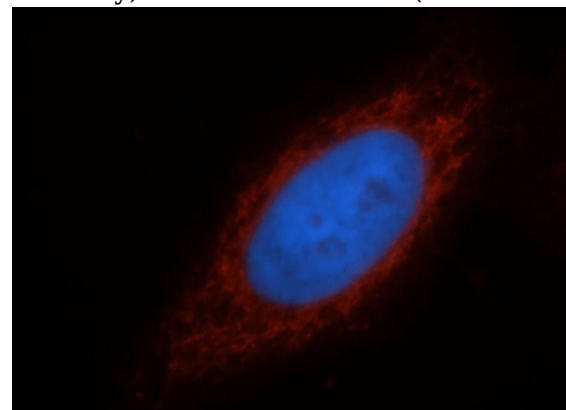
ELISA, WB, IHC, IF, IP

## Dilutions

Recommended Dilution:

WB: 1:1000-1:10000

Immunohistochemical of paraffin-embedded human brain using Catalog No:108287(ATF6B antibody) at dilution of 1:100 (under 40x lens)

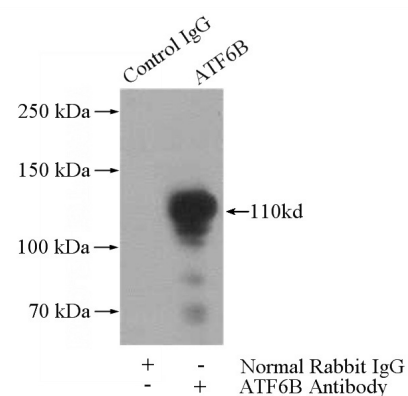


# ATF6B antibody

Catalog Number: 108287

Immunofluorescent analysis of HepG2 cells, using ATF6B antibody Catalog No:108287 at 1:25 dilution and Rhodamine-labeled goat anti-rabbit IgG (red). Blue pseudocolor = DAPI (fluorescent

DNA dye).



IP Result of anti-ATF6B (IP:Catalog No:108287, 4ug; Detection:Catalog No:108287 1:1000) with Jurkat cells lysate 3200ug.