

# ARHGAP1 antibody



Catalog Number: 108259

## Product name

ARHGAP1 antibody

WB: 1:200-1:2000

IHC: 1:20-1:200

## Specificity

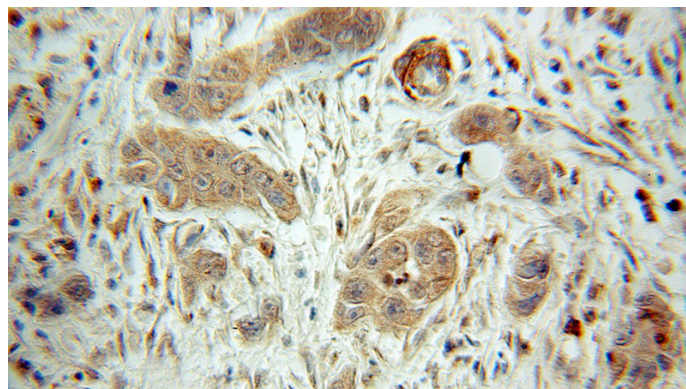
Human, Rat; other species not tested.

IF: 1:20-1:200

## Antibody description

ARHGAP1 Rabbit Polyclonal antibody. Positive IF detected in HeLa cells. Positive IHC detected in human pancreas cancer tissue. Positive WB detected in RAW 264.7 cells, human duodenum tissue, human heart tissue, human pancreas tissue, PC-12 cells. Observed molecular weight by Western-blot: 50 kDa

## Validations



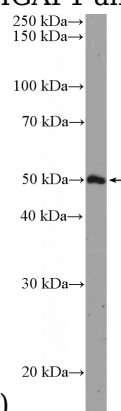
## Preparation

This antibody was obtained by immunization of ARHGAP1 recombinant protein (Accession Number: XM\_047426933). Purification method: Antigen affinity purified.

Immunohistochemical of paraffin-embedded human pancreas cancer using Catalog No:108259(ARHGAP1 antibody) at dilution of 1:50

## Formulation

PBS with 0.1% sodium azide and 50% glycerol pH 7.3.



(under 10x lens)

## Storage

Store at -20°C. DO NOT ALIQUOT

## Clonality

Polyclonal

RAW 264.7 cells were subjected to SDS PAGE followed by western blot with Catalog No:108259(ARHGAP1 Antibody) at dilution of 1:600

## Ig Type

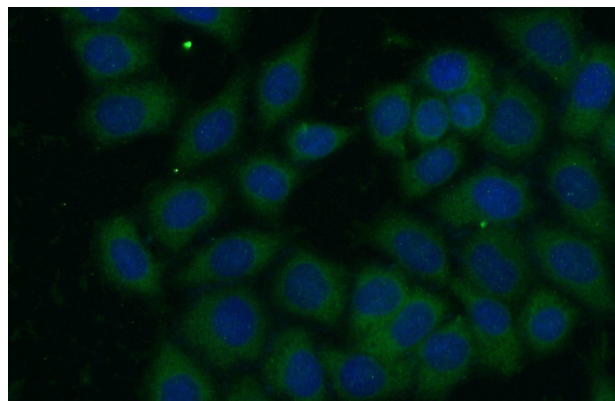
Rabbit IgG

## Applications

ELISA, IHC, WB, IF

## Dilutions

Recommended Dilution:



# ARHGAP1 antibody



Catalog Number: 108259

---

Immunofluorescent analysis of (-20oc Ethanol)  
fixed HeLa cells using Catalog  
No:108259(ARHGAP1 Antibody) at dilution of

1:100 and Alexa Fluor 488-congugated AffiniPure  
Goat Anti-Rabbit IgG(H+L)