

ARH3 antibody

Catalog Number: 108258

Product name

ARH3 antibody

Recommended Dilution:

WB: 1:500-1:5000

Specificity

Human, Mouse, Rat; other species not tested.

IHC: 1:20-1:200

IF: 1:20-1:200

Antibody description

ARH3 Rabbit Polyclonal antibody. Positive IF detected in HepG2 cells. Positive IHC detected in human testis tissue, human brain tissue, human heart tissue, human kidney tissue, human liver tissue, human spleen tissue. Positive WB detected in HepG2 cells, HeLa cells, mouse brain tissue, mouse heart tissue, mouse kidney tissue, mouse lung tissue, mouse thymus tissue. Observed molecular weight by Western-blot: 39 kDa

Validations



Preparation

This antibody was obtained by immunization of ARH3 recombinant protein (Accession Number: NM_017825). Purification method: Antigen affinity purified.

HepG2 cells were subjected to SDS PAGE followed by western blot with Catalog No:108258(ADPRHL2 antibody) at dilution of

Formulation

PBS with 0.02% sodium azide and 50% glycerol pH 7.3.

Storage

Store at -20°C. DO NOT ALIQUOT

Clonality

Polyclonal

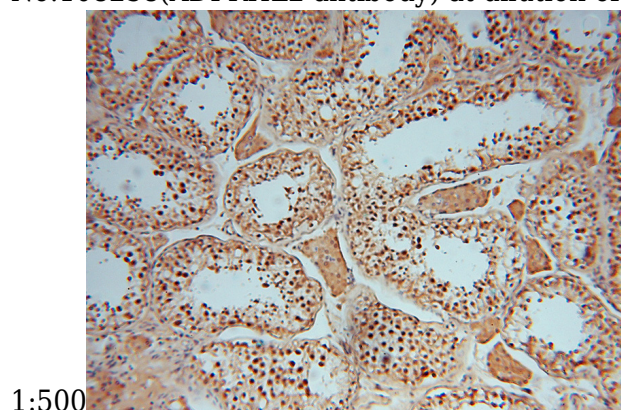
Ig Type

Rabbit IgG

Applications

ELISA, WB, IHC, IF

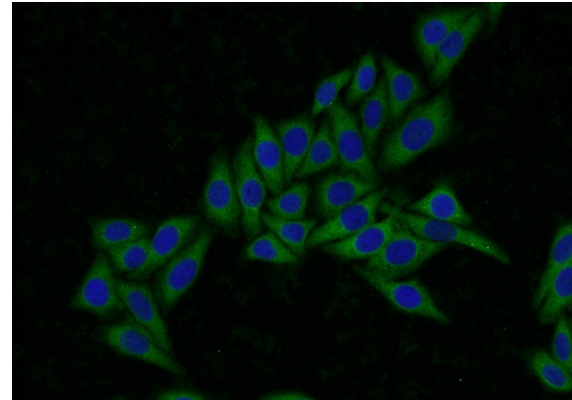
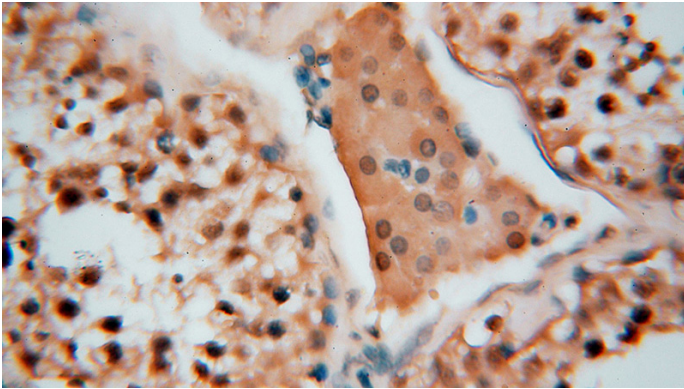
Dilutions



Immunohistochemical of paraffin-embedded human testis using Catalog No:108258(ADPRHL2 antibody) at dilution of 1:100 (under 10x lens)

ARH3 antibody

Catalog Number: 108258



Immunohistochemical of paraffin-embedded human testis using Catalog No:108258(ADPRHL2 antibody) at dilution of 1:100 (under 40x lens)

Immunofluorescent analysis of HepG2 cells using Catalog No:108258(ADPRHL2 Antibody) at dilution of 1:50 and Alexa Fluor 488-conjugated AffiniPure Goat Anti-Rabbit IgG(H+L)