

ARFIP1 antibody



Catalog Number: 108253

Product name

ARFIP1 antibody

Immunogen

[Human ARFIP1 Recombinant protein \(GST tag\)](#)

Specificity

human, mouse, rat; other species not tested.

Antibody description

ARFIP1 Rabbit Polyclonal antibody. Positive IHC detected in human pancreas. Positive IF detected in HepG2. Positive WB detected in HeLa cells, Jurkat cells. Observed molecular weight by Western-blot: 44kd

Preparation

This antibody was obtained by immunization of ARFIP1 recombinant protein (Accession Number: XM_011531869). Purification method: Antigen affinity purified.

Formulation

PBS with 0.02% sodium azide and 50% glycerol pH 7.3.

Storage

Store at -20°C. DO NOT ALIQUOT

Clonality

Polyclonal

Ig Type

Rabbit IgG

Applications

ELISA, WB, IHC, IF

Dilutions

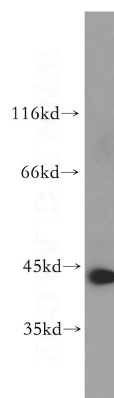
Recommended Dilution:

WB: 1:500-1:5000

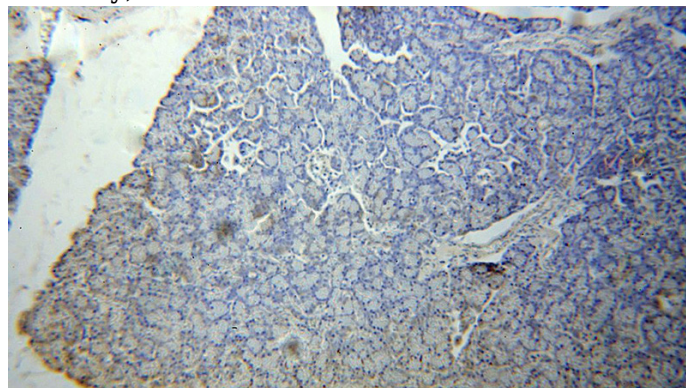
IHC: 1:20-1:200

IF: 1:10-1:100

Validations



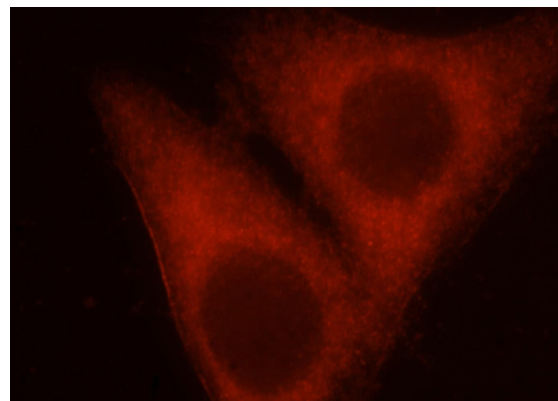
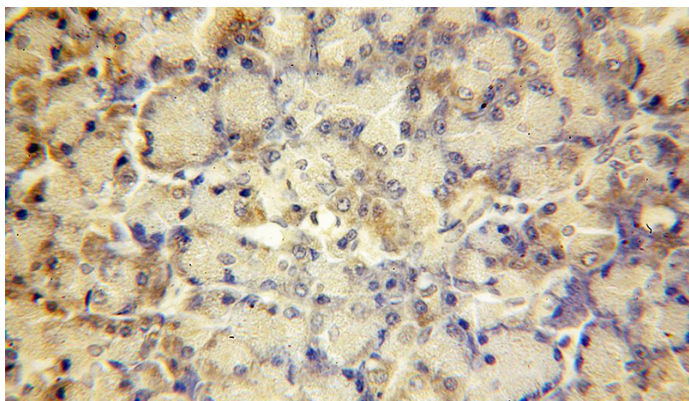
HeLa cells were subjected to SDS PAGE followed by western blot with Catalog No:108253(ARFIP1 antibody) at dilution of 1:500



Immunohistochemical of paraffin-embedded human pancreas using Catalog No:108253(ARFIP1 antibody) at dilution of 1:100 (under 10x lens)

ARFIP1 antibody

Catalog Number: 108253



Immunohistochemical of paraffin-embedded human pancreas using Catalog No:108253(ARFIP1 antibody) at dilution of 1:100 (under 40x lens)

Immunofluorescent analysis of HeLa cells, using ARFIP1 antibody Catalog No:108253 at 1:25 dilution and Rhodamine-labeled goat anti-rabbit IgG (red).