

ARF3 antibody

Catalog Number: 108245

Product name

ARF3 antibody

Recommended Dilution:

WB: 1:500-1:5000

Specificity

Human, Mouse, Rat; other species not tested.

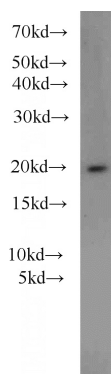
IHC: 1:20-1:200

IF: 1:20-1:200

Antibody description

ARF3 Rabbit Polyclonal antibody. Positive WB detected in mouse brain tissue, HeLa cells, HepG2 cells, human brain tissue, mouse cerebellum tissue, Raji cells, rat brain tissue. Positive IF detected in HepG2 cells. Positive IHC detected in human pancreas tissue, human pancreas cancer tissue. Observed molecular weight by Western-blot: 18-20 kDa

Validations



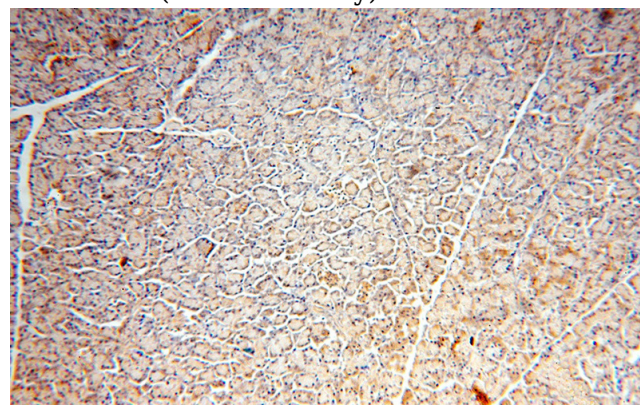
Preparation

This antibody was obtained by immunization of ARF3 recombinant protein (Accession Number: XM_005268856). Purification method: Antigen affinity purified.

mouse brain tissue were subjected to SDS PAGE followed by western blot with Catalog No:108245(ARF3 antibody) at dilution of 1:1000

Formulation

PBS with 0.1% sodium azide and 50% glycerol pH 7.3.



Storage

Store at -20°C. DO NOT ALIQUOT

Clonality

Polyclonal

Ig Type

Rabbit IgG

Applications

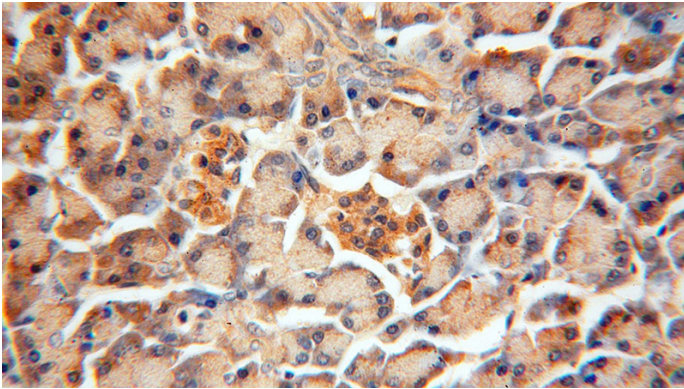
ELISA, IHC, IF, WB

Immunohistochemical of paraffin-embedded human pancreas using Catalog No:108245(ARF3 antibody) at dilution of 1:50 (under 10x lens)

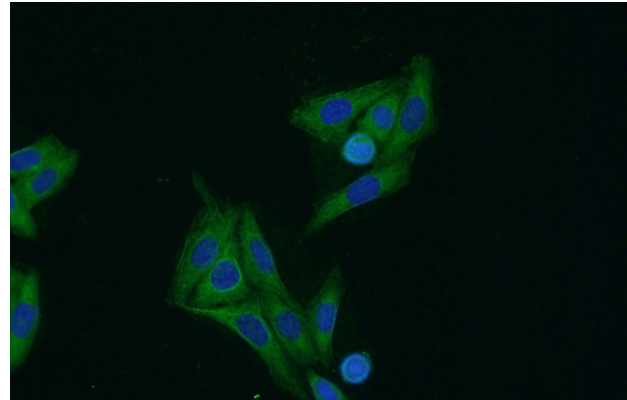
Dilutions

ARF3 antibody

Catalog Number: 108245



Immunohistochemical of paraffin-embedded human pancreas using Catalog No:108245(ARF3 antibody) at dilution of 1:50 (under 40x lens)



Immunofluorescent analysis of HepG2 cells using Catalog No:108245(ARF3 Antibody) at dilution of 1:50 and Alexa Fluor 488-conjugated AffiniPure Goat Anti-Rabbit IgG(H+L)