

ASH2L antibody

Catalog Number: 108228

Product name

ASH2L antibody

IP: 1:200-1:2000

IHC: 1:20-1:200

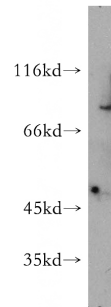
Specificity

Human, Mouse, Rat, Monkey; other species not tested.

Validations

Antibody description

ASH2L Rabbit Polyclonal antibody. Positive IP detected in COLO 320 cells. Positive WB detected in COS-7 cells, COLO 320 cells. Positive IHC detected in human gliomas tissue. Observed molecular weight by Western-blot: 80 kDa



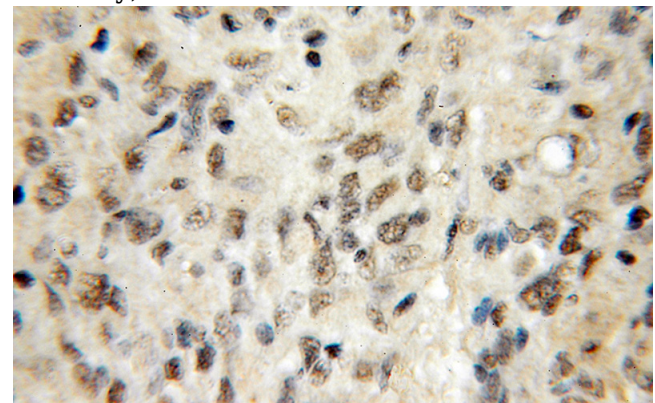
Preparation

This antibody was obtained by immunization of ASH2L recombinant protein (Accession Number: NM_001105214). Purification method: Antigen affinity purified.

COS-7 cells were subjected to SDS PAGE followed by western blot with Catalog No:108228(ASH2L antibody) at dilution of 1:1000

Formulation

PBS with 0.02% sodium azide and 50% glycerol pH 7.3.



Storage

Store at -20°C. DO NOT ALIQUOT

Clonality

Polyclonal

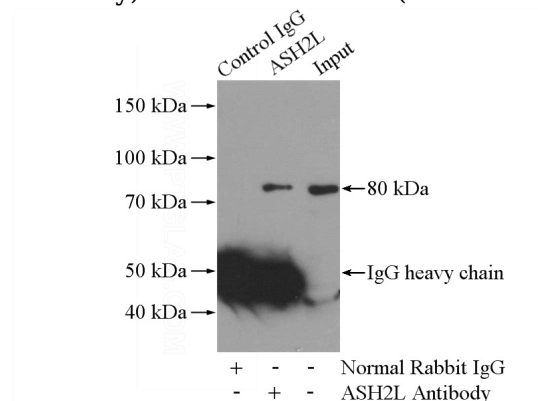
Immunohistochemical of paraffin-embedded human gliomas using Catalog No:108228(ASH2L antibody) at dilution of 1:50 (under 10x lens)

Ig Type

Rabbit IgG

Applications

ELISA, WB, IHC, IP



Dilutions

Recommended Dilution:

WB: 1:500-1:5000

IP Result of anti-ASH2L (IP:Catalog No:108228, 4ug; Detection:Catalog No:108228 1:500) with

ASH2L antibody



Catalog Number: 108228

COLO 320 cells lysate 2000ug.