

ASF1B antibody

Catalog Number: 108225

Product name

ASF1B antibody

Specificity

Human, Mouse, Rat; other species not tested.

Antibody description

ASF1B Rabbit Polyclonal antibody. Positive WB detected in HeLa cells, mouse thymus tissue. Positive IHC detected in human lymphoma tissue. Observed molecular weight by Western-blot: 22 kDa

Preparation

This antibody was obtained by immunization of ASF1B recombinant protein (Accession Number: NM_018154). Purification method: Antigen affinity purified.

Formulation

PBS with 0.1% sodium azide and 50% glycerol pH 7.3.

Storage

Store at -20°C. DO NOT ALIQUOT

Clonality

Polyclonal

Ig Type

Rabbit IgG

Applications

ELISA, IHC, WB

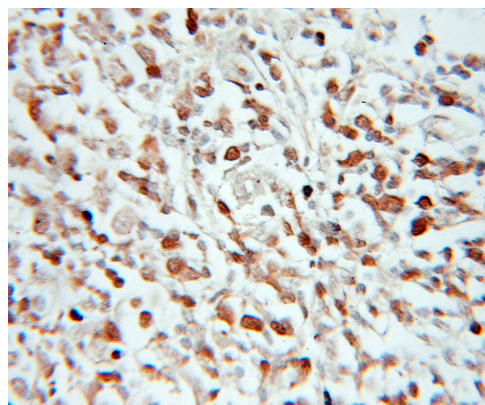
Dilutions

Recommended Dilution:

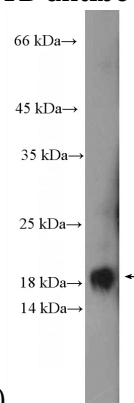
WB: 1:200-1:1000

IHC: 1:20-1:200

Validations



Immunohistochemical of paraffin-embedded human lymphoma using Catalog No:108225(ASF1B antibody) at dilution of 1:100



(under 10x lens)

HeLa cells were subjected to SDS PAGE followed by western blot with Catalog No:108225(ASF1B Antibody) at dilution of 1:300