

ASF1A antibody

Catalog Number: 108222

Product name

ASF1A antibody

IP: 1:200-1:2000

IHC: 1:10-1:100

Specificity

Human, Mouse, Rat; other species not tested.

Antibody description

ASF1A Rabbit Polyclonal antibody. Positive WB detected in HeLa cells, HEK-293 cells. Positive IP detected in HEK-293 cells. Positive IHC detected in human lymphoma tissue. Observed molecular weight by Western-blot: 23kd

Preparation

This antibody was obtained by immunization of ASF1A recombinant protein (Accession Number: NM_014034). Purification method: Antigen affinity purified.

Formulation

PBS with 0.1% sodium azide and 50% glycerol pH 7.3.

Storage

Store at -20°C. DO NOT ALIQUOT

Clonality

Polyclonal

Ig Type

Rabbit IgG

Applications

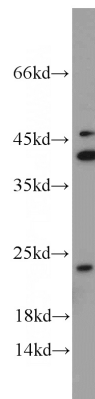
ELISA, WB, IHC, IP

Dilutions

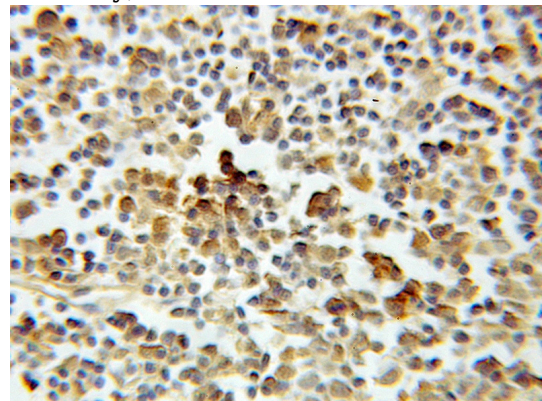
Recommended Dilution:

WB: 1:200-1:2000

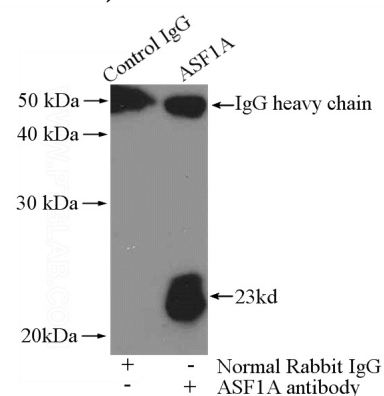
Validations



HeLa cells were subjected to SDS PAGE followed by western blot with Catalog No:108222(ASF1A antibody) at dilution of 1:600



Immunohistochemical of paraffin-embedded human lymphoma using Catalog No:108222(ASF1A antibody) at dilution of 1:10 (under 10x lens)



IP Result of anti-ASF1A (IP:Catalog No:108222,

ASF1A antibody



Catalog Number: 108222

4ug; Detection:Catalog No:108222 1:800) with HEK-293 cells lysate 2800ug.