

Product name

Polyclonal

ARX antibody

Ig Type**Specificity**

Rabbit IgG

Human, Mouse; other species not tested.

Applications**Antibody description**

ELISA, WB

ARX Rabbit Polyclonal antibody. Positive WB detected in NIH/3T3 cells, SH-SY5Y cells. Observed molecular weight by Western-blot: 58 kDa

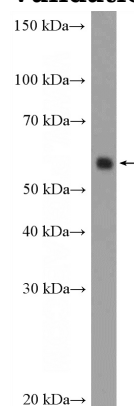
Dilutions

Recommended Dilution:

WB: 1:200-1:1000

Preparation

This antibody was obtained by immunization of Peptide (Accession Number: NM_139058). Purification method: Antigen affinity purified.

Validations**Formulation**

PBS with 0.02% sodium azide and 50% glycerol pH 7.3.

Storage

Store at -20°C. DO NOT ALIQUOT

NIH/3T3 cells were subjected to SDS PAGE followed by western blot with Catalog No:108207(ARX Antibody) at dilution of 1:300

Clonality