

# ARTS1 antibody

Catalog Number: 108206

## Product name

ARTS1 antibody

IP: 1:200-1:2000

IHC: 1:20-1:200

## Specificity

Human, Mouse, Rat; other species not tested.

## Antibody description

ARTS1 Rabbit Polyclonal antibody. Positive WB detected in Jurkat cells. Positive IP detected in Jurkat cells. Positive IHC detected in human ovary tumor tissue. Observed molecular weight by Western-blot: 106 kDa

## Preparation

This antibody was obtained by immunization of ARTS1 recombinant protein (Accession Number: NM\_001198541). Purification method: Antigen affinity purified.

## Formulation

PBS with 0.02% sodium azide and 50% glycerol pH 7.3.

## Storage

Store at -20°C. DO NOT ALIQUOT

## Clonality

Polyclonal

## Ig Type

Rabbit IgG

## Applications

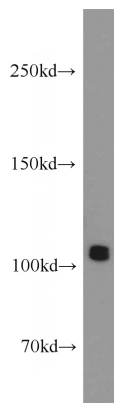
ELISA, WB, IHC, IP

## Dilutions

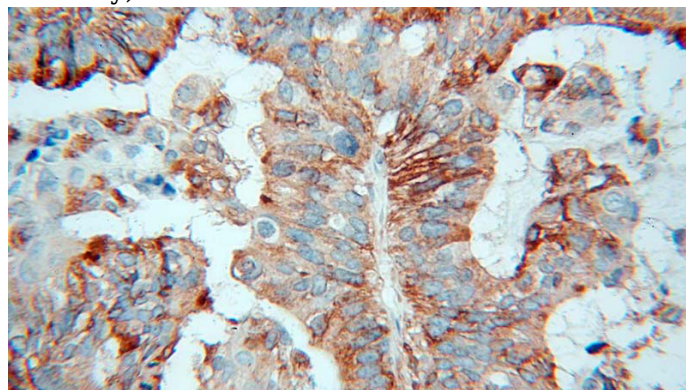
Recommended Dilution:

WB: 1:500-1:5000

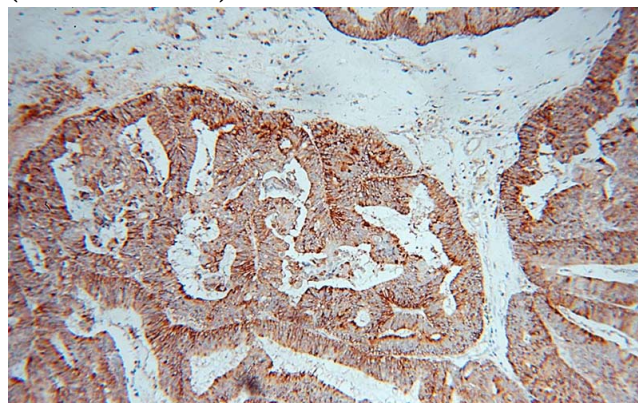
## Validations



Jurkat cells were subjected to SDS PAGE followed by western blot with Catalog No:108206(ERAP1 antibody) at dilution of 1:1000



Immunohistochemical of paraffin-embedded human ovary tumor using Catalog No:108206(ERAP1 antibody) at dilution of 1:100 (under 40x lens)



Immunohistochemical of paraffin-embedded

# ARTS1 antibody

Catalog Number: 108206

human ovary tumor using Catalog No:108206(ERAP1 antibody) at dilution of 1:100 (under 10x lens)

IP Result of anti-ERAP1 (IP:Catalog No:108206, 4ug; Detection:Catalog No:108206 1:600) with Jurkat cells lysate 3600ug.

