

# ARL1 antibody



Catalog Number: 108195

## Product name

ARL1 antibody

## Specificity

Human, Mouse, Rat; other species not tested.

## Antibody description

ARL1 Rabbit Polyclonal antibody. Positive WB detected in HepG2 cells, HeLa cells, K-562 cells, mouse liver tissue. Observed molecular weight by Western-blot: 20 kDa

## Preparation

This antibody was obtained by immunization of ARL1 recombinant protein (Accession Number: NM\_001177). Purification method: Antigen affinity purified.

## Formulation

PBS with 0.02% sodium azide and 50% glycerol pH 7.3.

## Storage

Store at -20°C. DO NOT ALIQUOT

## Clonality

Polyclonal

## Ig Type

Rabbit IgG

## Applications

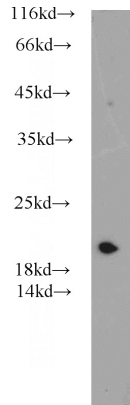
ELISA, WB

## Dilutions

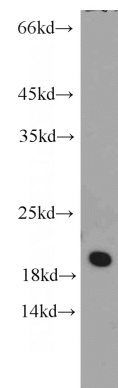
Recommended Dilution:

WB: 1:200-1:2000

## Validations

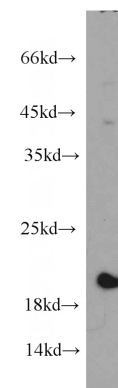


HeLa cells were subjected to SDS PAGE followed by western blot with Catalog No:108195(ARL1



antibody) at dilution of 1:500

K-562 cells were subjected to SDS PAGE followed by western blot with Catalog No:108195(ARL1



antibody) at dilution of 1:500

HepG2 cells were subjected to SDS PAGE followed by western blot with Catalog No:108195(ARL1 antibody) at dilution of 1:500