

# ARHGEF18 antibody



Catalog Number: 108185

## Product name

ARHGEF18 antibody

## Specificity

Human, Mouse; other species not tested.

## Antibody description

ARHGEF18 Rabbit Polyclonal antibody. Positive WB detected in mouse testis tissue. Positive IHC detected in human pancreas cancer tissue, human kidney tissue. Observed molecular weight by Western-blot: 120-130 kDa

## Preparation

This antibody was obtained by immunization of ARHGEF18 recombinant protein (Accession Number: BC014994). Purification method: Antigen affinity purified.

## Formulation

PBS with 0.02% sodium azide and 50% glycerol pH 7.3.

## Storage

Store at -20°C. DO NOT ALIQUOT

## Clonality

Polyclonal

## Ig Type

Rabbit IgG

## Applications

ELISA, WB, IHC

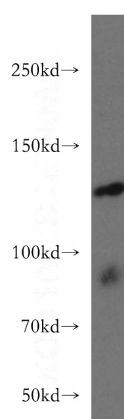
## Dilutions

Recommended Dilution:

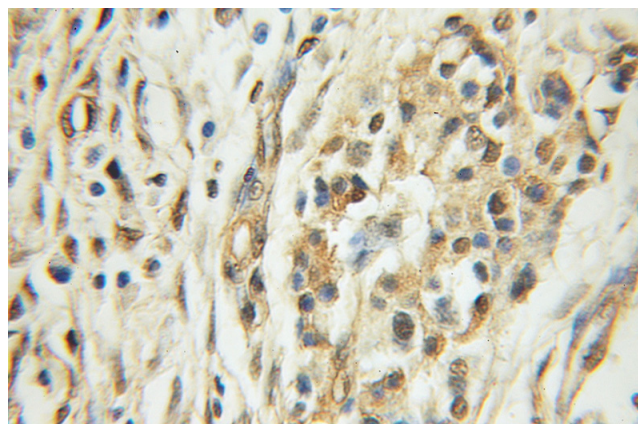
WB: 1:200-1:1000

IHC: 1:20-1:200

## Validations



mouse testis tissue were subjected to SDS PAGE followed by western blot with Catalog No:108185(ARHGEF18 antibody) at dilution of 1:300



Immunohistochemical of paraffin-embedded human pancreas cancer using Catalog No:108185(ARHGEF18 antibody) at dilution of 1:50 (under 10x lens)