

ARHGDIB antibody



Catalog Number: 108180

Product name

ARHGDIB antibody

Recommended Dilution:

WB: 1:500-1:5000

Immunogen

IP: 1:500-1:5000

[Human ARHGDIB Recombinant protein \(GST tag\)](#)

IHC: 1:20-1:200

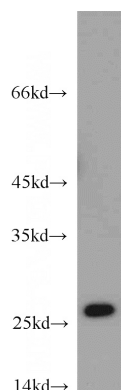
Specificity

Human, Mouse, Rat; other species not tested.

Validations

Antibody description

ARHGDIB Rabbit Polyclonal antibody. Positive IHC detected in human stomach cancer tissue. Positive WB detected in Jurkat cells, HL-60 cells, K-562 cells, Raji cells, rat spleen tissue. Positive IP detected in Raji cells. Observed molecular weight by Western-blot: 27 kDa



Preparation

This antibody was obtained by immunization of ARHGDIB recombinant protein (Accession Number: NM_001321423). Purification method: Antigen affinity purified.

Jurkat cells were subjected to SDS PAGE followed by western blot with Catalog No:108180(ARHGDIB antibody) at dilution of

Formulation

PBS with 0.02% sodium azide and 50% glycerol pH 7.3.

Storage

Store at -20°C. DO NOT ALIQUOT

Clonality

Polyclonal

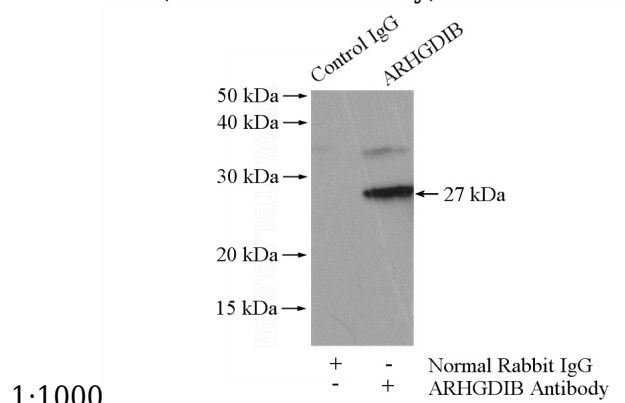
Ig Type

Rabbit IgG

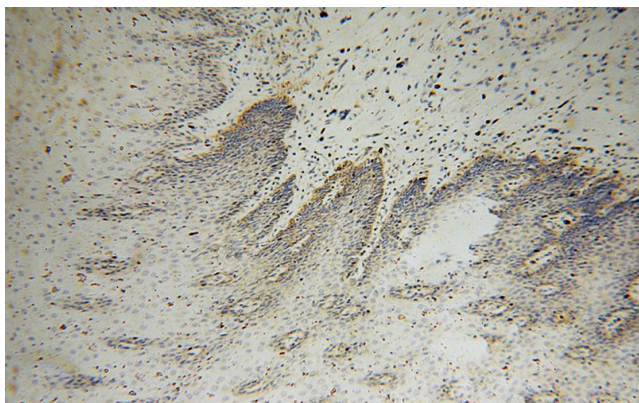
Applications

ELISA, IHC, WB, IP

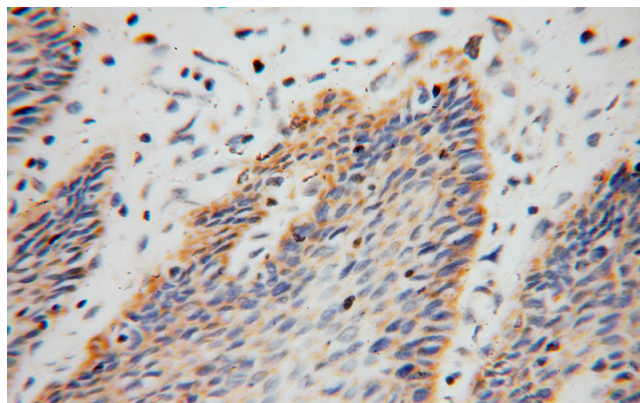
Dilutions



IP Result of anti-ARHGDIB (IP:Catalog No:108180, 4ug; Detection:Catalog No:108180 1:1000) with Raji cells lysate 2000ug.



Immunohistochemical of paraffin-embedded human stomach cancer using Catalog No:108180(ARHGDIB antibody) at dilution of 1:100 (under 10x lens)



Immunohistochemical of paraffin-embedded human stomach cancer using Catalog No:108180(ARHGDIB antibody) at dilution of 1:100 (under 40x lens)