

ARP2 antibody

Catalog Number: 108161

Product name

ARP2 antibody

Specificity

Human, Mouse, Rat; other species not tested.

Antibody description

ARP2 Rabbit Polyclonal antibody. Positive WB detected in MCF7 cells, HEK-293 cells, Jurkat cells, mouse kidney tissue, mouse liver tissue, rat kidney tissue, RAW264.7 cells, SMMC-7721 cells. Positive IHC detected in human prostate cancer tissue. Observed molecular weight by Western-blot: 43-45kd

Preparation

This antibody was obtained by immunization of ARP2 recombinant protein (Accession Number: NM_005722). Purification method: Antigen affinity purified.

Formulation

PBS with 0.1% sodium azide and 50% glycerol pH 7.3.

Storage

Store at -20°C. DO NOT ALIQUOT

Clonality

Polyclonal

Ig Type

Rabbit IgG

Applications

ELISA, WB, IHC

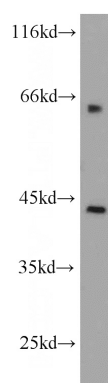
Dilutions

Recommended Dilution:

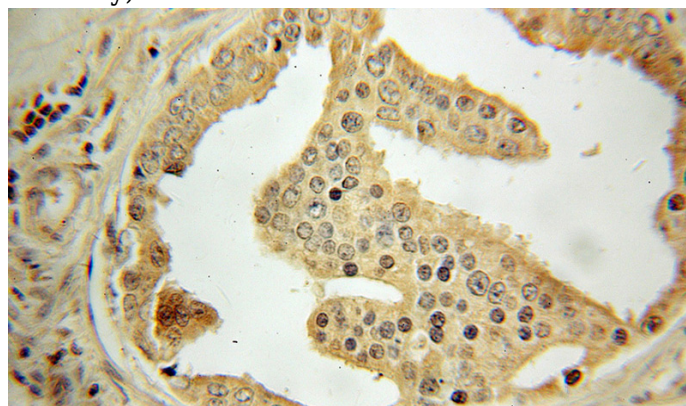
WB: 1:200-1:2000

IHC: 1:20-1:200

Validations



MCF7 cells were subjected to SDS PAGE followed by western blot with Catalog No:108161(ACR2 antibody) at dilution of 1:500



Immunohistochemical of paraffin-embedded human prostate cancer using Catalog No:108161(ACR2 antibody) at dilution of 1:50 (under 10x lens)