

# ARMC8 antibody

Catalog Number: 108152

## Product name

ARMC8 antibody

## Specificity

Human, Mouse, Rat; other species not tested.

## Antibody description

ARMC8 Rabbit Polyclonal antibody. Positive WB detected in MCF7 cells, HeLa cells, HepG2 cells, mouse skeletal muscle tissue. Positive IF detected in MCF-7 cells. Observed molecular weight by Western-blot: 75.5kd

## Preparation

This antibody was obtained by immunization of ARMC8 recombinant protein (Accession Number: NM\_213654). Purification method: Antigen affinity purified.

## Formulation

PBS with 0.1% sodium azide and 50% glycerol pH 7.3.

## Storage

Store at -20°C. DO NOT ALIQUOT

## Clonality

Polyclonal

## Ig Type

Rabbit IgG

## Applications

ELISA, WB, IF

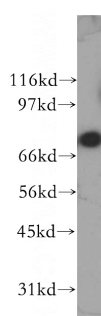
## Dilutions

Recommended Dilution:

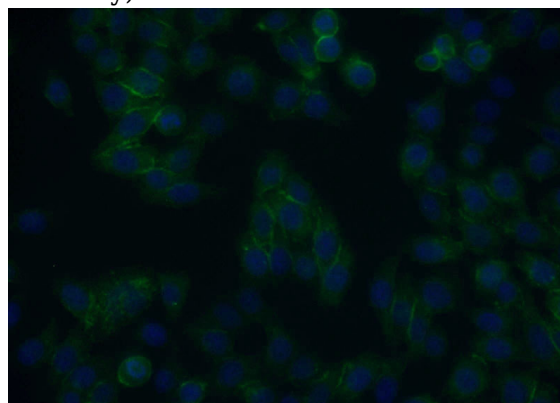
WB: 1:500-1:5000

IF: 1:10-1:100

## Validations



MCF7 cells were subjected to SDS PAGE followed by western blot with Catalog No:108152(ARMC8 antibody) at dilution of 1:400



Immunofluorescent analysis of MCF-7 cells using Catalog No:108152(ARMC8 Antibody) at dilution of 1:25 and Alexa Fluor 488-conjugated AffiniPure Goat Anti-Rabbit IgG(H+L)