

ARMC10 antibody



Catalog Number: 108148

Product name

ARMC10 antibody

IP: 1:200-1:2000

IHC: 1:20-1:200

Specificity

Human, Mouse, Rat; other species not tested.

Antibody description

ARMC10 Rabbit Polyclonal antibody. Positive IP detected in A431 cells. Positive WB detected in A431 cells, HEK-293 cells, HepG2 cells, mouse brain tissue, mouse liver tissue. Positive IHC detected in human placenta tissue. Observed molecular weight by Western-blot: 31-37 kDa

Preparation

This antibody was obtained by immunization of ARMC10 recombinant protein (Accession Number: NM_001161009). Purification method: Antigen affinity purified.

Formulation

PBS with 0.02% sodium azide and 50% glycerol pH 7.3.

Storage

Store at -20°C. DO NOT ALIQUOT

Clonality

Polyclonal

Ig Type

Rabbit IgG

Applications

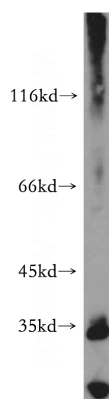
ELISA, WB, IHC, IP

Dilutions

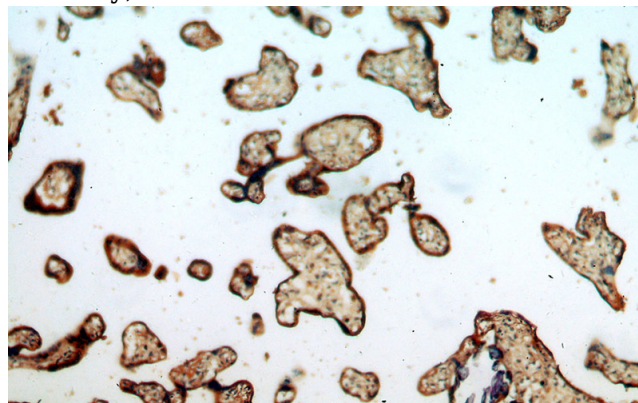
Recommended Dilution:

WB: 1:500-1:5000

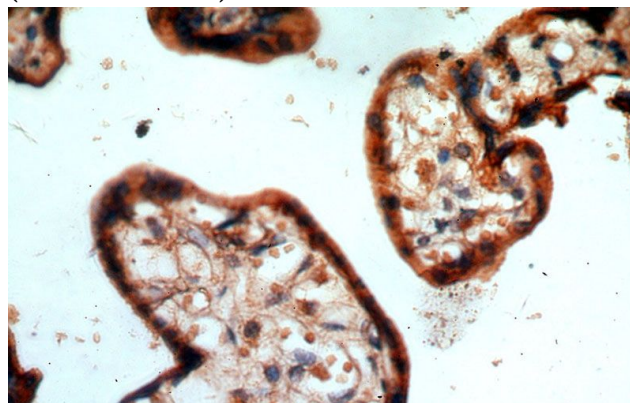
Validations



A431 cells were subjected to SDS PAGE followed by western blot with Catalog No:108148(ARMC10 antibody) at dilution of 1:500



Immunohistochemical of paraffin-embedded human placenta using Catalog No:108148(ARMC10 antibody) at dilution of 1:100 (under 10x lens)



Immunohistochemical of paraffin-embedded

ARMC10 antibody



Catalog Number: 108148

human placenta using Catalog No:108148(ARMC10 antibody) at dilution of 1:100 (under 40x lens)

IP Result of anti-ARMC10 (IP:Catalog No:108148, 4ug; Detection:Catalog No:108148 1:500) with A431 cells lysate 1600ug.

