

API5 antibody



Catalog Number: 108140

Product name

API5 antibody

IHC: 1:20-1:200

IF: 1:50-1:500

Specificity

Human, Mouse; other species not tested.

Antibody description

API5 Rabbit Polyclonal antibody. Positive IF detected in HepG2 cells. Positive IHC detected in human pancreas tissue. Positive WB detected in HepG2 cells, HeLa cells, MCF-7 cells, NIH/3T3 cells. Observed molecular weight by Western-blot: 50-55 kDa

Preparation

This antibody was obtained by immunization of API5 recombinant protein (Accession Number: NM_006595). Purification method: Antigen affinity purified.

Formulation

PBS with 0.1% sodium azide and 50% glycerol pH 7.3.

Storage

Store at -20°C. DO NOT ALIQUOT

Clonality

Polyclonal

Ig Type

Rabbit IgG

Applications

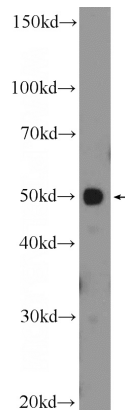
ELISA, IHC, WB, IF

Dilutions

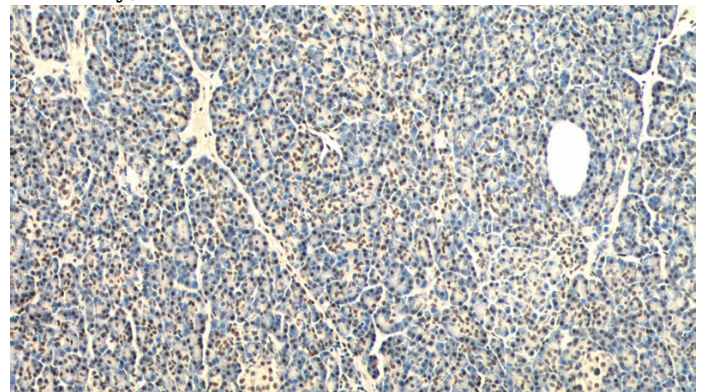
Recommended Dilution:

WB: 1:200-1:1000

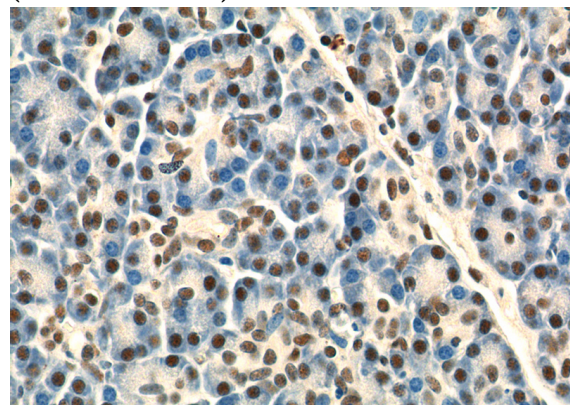
Validations



HepG2 cells were subjected to SDS PAGE followed by western blot with Catalog No:108140(API5 Antibody) at dilution of 1:300



Immunohistochemistry of paraffin-embedded human pancreas tissue slide using Catalog No:108140(API5 Antibody) at dilution of 1:50 (under 10x lens)

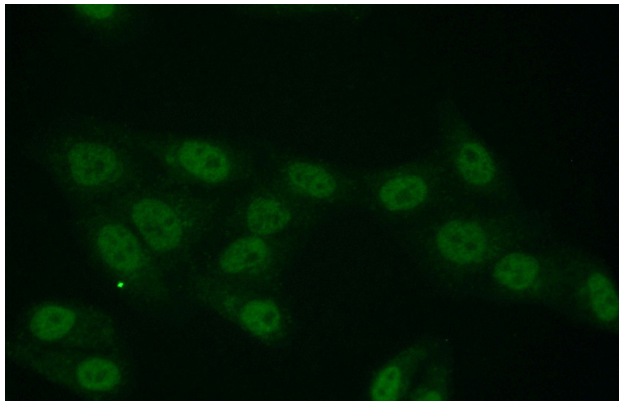


Immunohistochemistry of paraffin-embedded

API5 antibody

Catalog Number: 108140

human pancreas tissue slide using Catalog No:108140(API5 Antibody) at dilution of 1:50 (under 40x lens)



Immunofluorescent analysis of (10% Formaldehyde) fixed HepG2 cells using Catalog No:108140(API5 Antibody) at dilution of 1:50 and Alexa Fluor 488-conjugated AffiniPure Goat Anti-Rabbit IgG(H+L)