

# AP2B1 antibody



Catalog Number: 108120

## Product name

AP2B1 antibody

IP: 1:200-1:2000

IF: 1:10-1:100

## Specificity

Human, Mouse, Rat; other species not tested.

## Antibody description

AP2B1 Rabbit Polyclonal antibody. Positive IF detected in Hela cells. Positive IP detected in K-562 cells. Positive WB detected in K-562 cells, C6 cells, HeLa cells. Observed molecular weight by Western-blot: 100 kDa-115 kDa

## Preparation

This antibody was obtained by immunization of AP2B1 recombinant protein (Accession Number: XM\_005257938). Purification method: Antigen affinity purified.

## Formulation

PBS with 0.02% sodium azide and 50% glycerol pH 7.3.

## Storage

Store at -20°C. DO NOT ALIQUOT

## Clonality

Polyclonal

## Ig Type

Rabbit IgG

## Applications

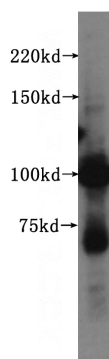
ELISA, WB, IF, IP

## Dilutions

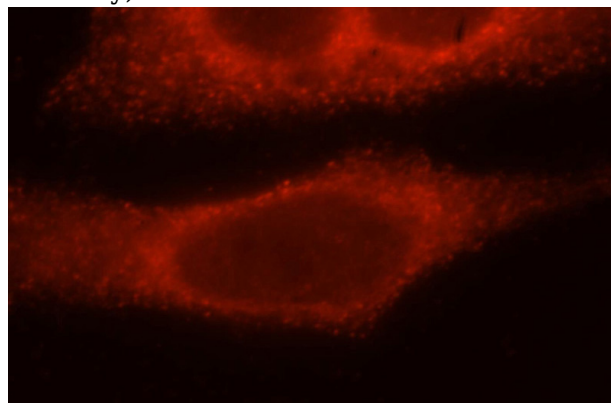
Recommended Dilution:

WB: 1:1000-1:10000

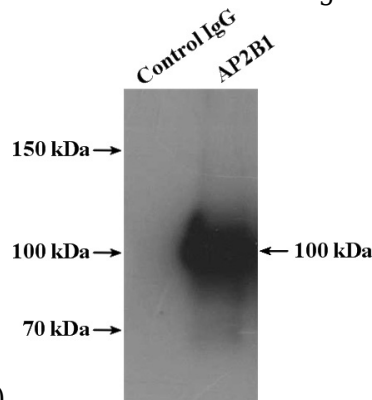
## Validations



K-562 cells were subjected to SDS PAGE followed by western blot with Catalog No:108120(AP2B1 antibody) at dilution of 1:500



Immunofluorescent analysis of Hela cells, using AP2B1 antibody Catalog No:108120 at 1:25 dilution and Rhodamine-labeled goat anti-rabbit



IgG (red).

IP Result of anti-AP2B1 (IP:Catalog No:108120,

# AP2B1 antibody



Catalog Number: 108120

---

4ug; Detection:Catalog No:108120 1:500) with K-562 cells lysate 3200ug.