

# AP1M2 antibody

Catalog Number: 108118

## Product name

AP1M2 antibody

## Specificity

Human, Mouse, Rat; other species not tested.

## Antibody description

AP1M2 Rabbit Polyclonal antibody. Positive IHC detected in human pancreas cancer tissue, human kidney tissue. Positive WB detected in mouse colon tissue, BxPC-3 cells, Hacat cells. Observed molecular weight by Western-blot: 50-55 kDa

## Preparation

This antibody was obtained by immunization of AP1M2 recombinant protein (Accession Number: NM\_001300887). Purification method: Antigen affinity purified.

## Formulation

PBS with 0.1% sodium azide and 50% glycerol pH 7.3.

## Storage

Store at -20°C. DO NOT ALIQUOT

## Clonality

Polyclonal

## Ig Type

Rabbit IgG

## Applications

ELISA, WB, IHC

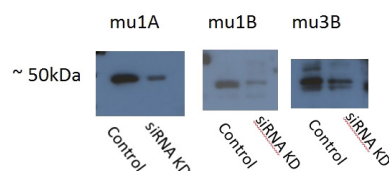
## Dilutions

Recommended Dilution:

WB: 1:200-1:2000

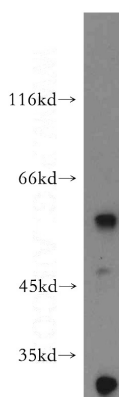
IHC: 1:10-1:100

## Validations

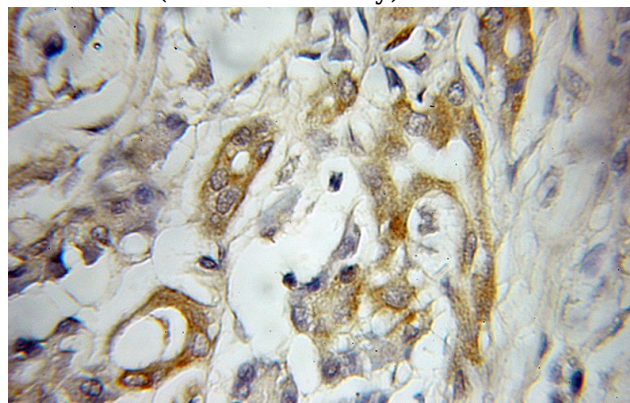


AP1M1 is mu1A  
AP1M2 is mu1B  
Ap3M2 is mu3B  
acceptable bands ~50 kDa showing some degree of siRNA knockdown

WB result of AP1M2 antibody (Catalog No:108118;1:500) with siRNA cell lysate.



mouse colon tissue were subjected to SDS PAGE followed by western blot with Catalog No:108118(AP1M2 antibody) at dilution of 1:500



Immunohistochemical of paraffin-embedded human pancreas cancer using Catalog No:108118(AP1M2 antibody) at dilution of 1:10 (under 10x lens)