

# ANTXR2 antibody

Catalog Number: 108109

## Product name

ANTXR2 antibody

WB: 1:200-1:2000

IP: 1:200-1:2000

## Specificity

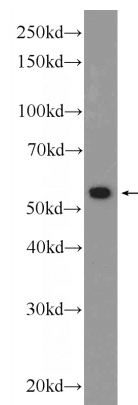
Human, Mouse, Rat; other species not tested.

IHC: 1:20-1:200

## Antibody description

ANTXR2 Rabbit Polyclonal antibody. Positive IP detected in HEK-293 cells. Positive WB detected in HEK-293 cells. Positive IHC detected in human ovary tissue, human kidney tissue, human lung tissue, human placenta tissue, human testis tissue. Observed molecular weight by Western-blot: 55 kDa

## Validations



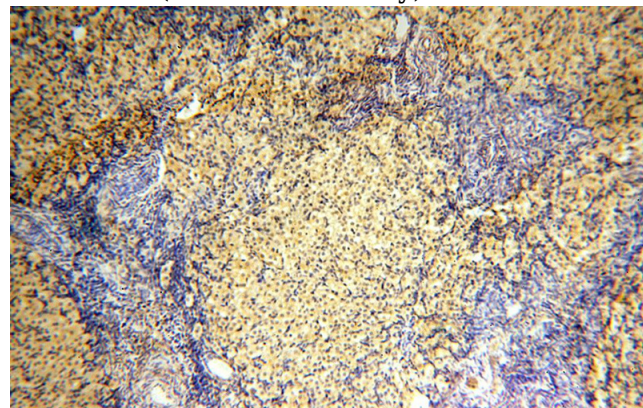
## Preparation

This antibody was obtained by immunization of ANTXR2 recombinant protein (Accession Number: NM\_001286780). Purification method: Antigen affinity purified.

HEK-293 cells were subjected to SDS PAGE followed by western blot with Catalog No:108109(ANTXR2 Antibody) at dilution of 1:600

## Formulation

PBS with 0.02% sodium azide and 50% glycerol pH 7.3.



## Storage

Store at -20°C. DO NOT ALIQUOT

## Clonality

Polyclonal

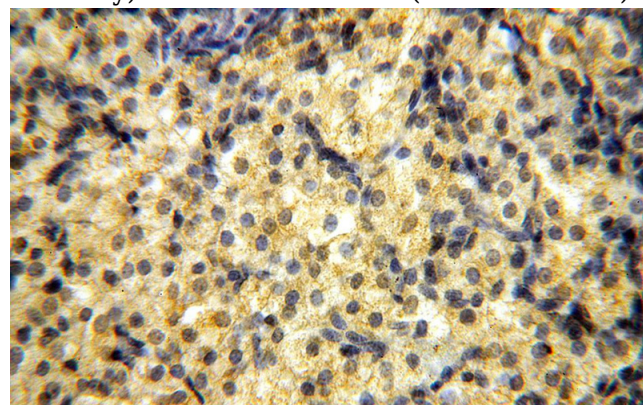
Immunohistochemical of paraffin-embedded human ovary using Catalog No:108109(ANTXR2 antibody) at dilution of 1:100 (under 10x lens)

## Ig Type

Rabbit IgG

## Applications

ELISA, IHC, WB, IP



## Dilutions

Recommended Dilution:

# ANTXR2 antibody

Catalog Number: 108109

Immunohistochemical of paraffin-embedded human ovary using Catalog No:108109(ANTXR2 antibody) at dilution of 1:100 (under 40x lens)

IP Result of anti-ANTXR2 (IP:Catalog No:108109, 4ug; Detection:Catalog No:108109 1:500) with HEK-293 cells lysate 2800ug.

